

# For Residential and Commercial Applications

Job Name \_\_\_\_\_  
 Job Location \_\_\_\_\_  
 Engineer \_\_\_\_\_  
 Approval \_\_\_\_\_

Contractor \_\_\_\_\_  
 Approval \_\_\_\_\_  
 Contractor's P.O. No. \_\_\_\_\_  
 Representative \_\_\_\_\_

## Series

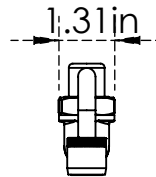
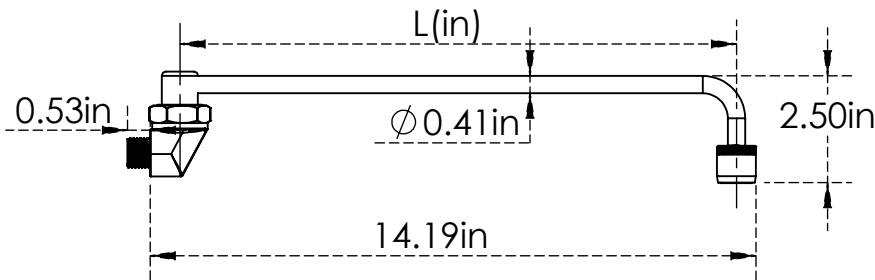
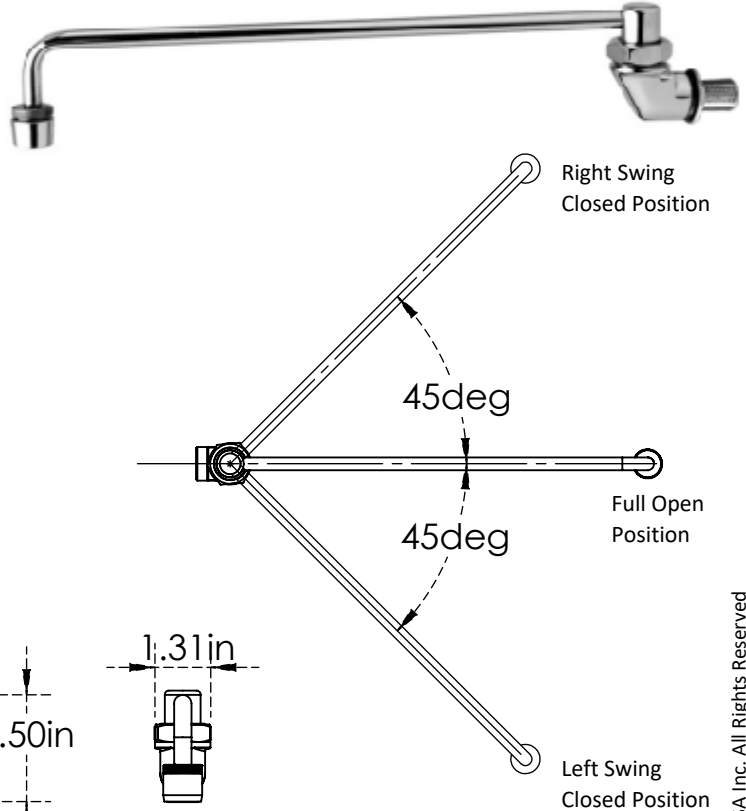
Wok Range Faucet with 13" and 17"  
 Swing Nozzle – 3/8" NPT Male Inlet  
 Sizes:

13" and 17" spout

### Features & Benefits:

- Wall mounted range faucet w/ chrome plated brass body.
- Automatically turns on when spout is swung over wok.
- 2.2 GPM aerator.
- 3/8" NPT Male Inlet.
- 13" Swing Nozzle.

C8493 Series



### Aerators:

Standard Aerator	Suffix
<input type="checkbox"/> 0.20 GPM	E1
<input type="checkbox"/> 0.50 GPM	E2
<input type="checkbox"/> 1.00 GPM	E3
<input type="checkbox"/> 1.50 GPM	E4
<input type="checkbox"/> 1.80 GPM	E5
<input type="checkbox"/> 2.20 GPM	E6

### Dimensions:

Part No	Length(L)	Finish
C8493	13"	Chrome Plated
C8493-17	17"	Chrome Plated

### NOTICE

The information contained herein is not intended to replace the full product installation and safety information available or the experience of a trained product installer. You are required to thoroughly read all installation instructions and product safety information before beginning the installation of this product.

Model e.g.  
**C8493-E6**

Standard Aerator **2.20 GPM**



US & Canada :- +1-678 666 2001

Krome product Specifications in U.S. customary units and metric are approximate and are provided for reference only. For precise measurements, please contact Krome Technical Service. Krome reserves the right to change or modify product design, construction, specifications, or materials without prior notice and without incurring any obligation to make such changes and modifications on Krome products previously or subsequently sold. For most updated specification sheet, go to [www.aluids.com](http://www.aluids.com)