

# ALUIDS

---

## CATALOG

2020



- ✓ Pre Rinse Units
- ✓ Spray Valves
- ✓ Pantry Faucets
- ✓ Hose Reels
- ✓ Waste Valves



ALUIDS

ABOUT  
US

## Art & Performance Blended Together

ALUIDS - brand is a name derived from fluids which is born in Atlanta, GA, Aluids is a brand of **KROME USA INC.**, A company with more than 45 years of experience in field of plumbing.

ALUIDS offers the most innovative range of products & accessories for food service, commercial plumbing, industrial and Institutional markets. We offer complete range of Basic to exclusive commercial Kitchen, Plumbing Products & accessories for a broad spectrum of consumers. Aluids has its own manufacturing plant which brings us to top level in Quality and Process.

With a unique combination of features and designs, ALUIDS has been able to win the trust of many over the years, making it a brand of choice for projects world wide.

### Core Values

- ✓ **Putting the customer first** - Our business prioritize our customer ahead of anything and everything else.
- ✓ **Integrity** - We believe our business should be done in fair, honest and in transparent way.

### Quality

Everything at ALUIDS comes with a seal of exceptional quality. We follow stringent quality procedures to make sure every product exceeds customer expectations.

The expert's team at ALUIDS are specialists in casting, electroplating, assembling, sanding and finishing our products to the highest level.



# CONTENTS

## Pre Rinse Units

Wall Mount Pre- Rinse  
Deck Mount Pre- Rinse  
Ecoline Pre- Rinse

## Pre- Rinse Accessories

Spray Valve  
Riser Tubes  
Flexible Hoses  
Wall Brackets  
Nozzels  
Supply Inlets  
Cartridges

## Faucet & Components

Double Pantry Deck Mount Faucet  
Double Pantry Wall Mount Faucet  
Add On Faucet

## Glass Fillers & Hose Reel

Glass fillers  
Hose Reel

## Drains and P- Traps

Waste Valves  
P- Traps

## Repair Kits

Spray Valve Repair Kit  
Handle Kit  
Economy Lever Handle Kit  
Pre Rinse Valve Assembly

# ALUIDS



\*4 Years Warranty on all Heavy Duty Pre Rinse Faucets and Commercial Kitchen Accessories.

[www.aluids.com](http://www.aluids.com)



# PRE- RINSE UNIT

ALUIDS



Pre Rinse Faucet Spring:  
Reduces the stress on  
the hose at key points.



Riser Tubes: Ideal for floor  
mount Faucet installation.



Spray Valve: Heavy-Duty spray  
valves with 1.42 GPM Designed for  
use in Commercial Kitchens.



Swing Nozzle: Stream  
Regulator Suitable for  
all Aluids Faucets.



High Performance cartridge valves  
that are designed for longevity.



Double Pantry Wall Mounted Faucet:  
The perfect solution when  
you are required with Steady  
water fixture in your facility.



Lever Handle with cold  
Index : Pressure of  
20 - 126 psi at temperature  
of 40 F to 140 F.

Pre-rinse units are must-have equipment in all commercial kitchens. The efficient high-pressure water stream of pre-rinse units reduces turnaround time and effort in the cleaning process.

Aluids offers commercial pre-rinse units in three categories – wall mount, deck mount and Economy. Built to last long with reliable brass material and coated with food safe chrome plating. With all these qualities, pre-rinse units are a great tool to have and we have best of the lot.



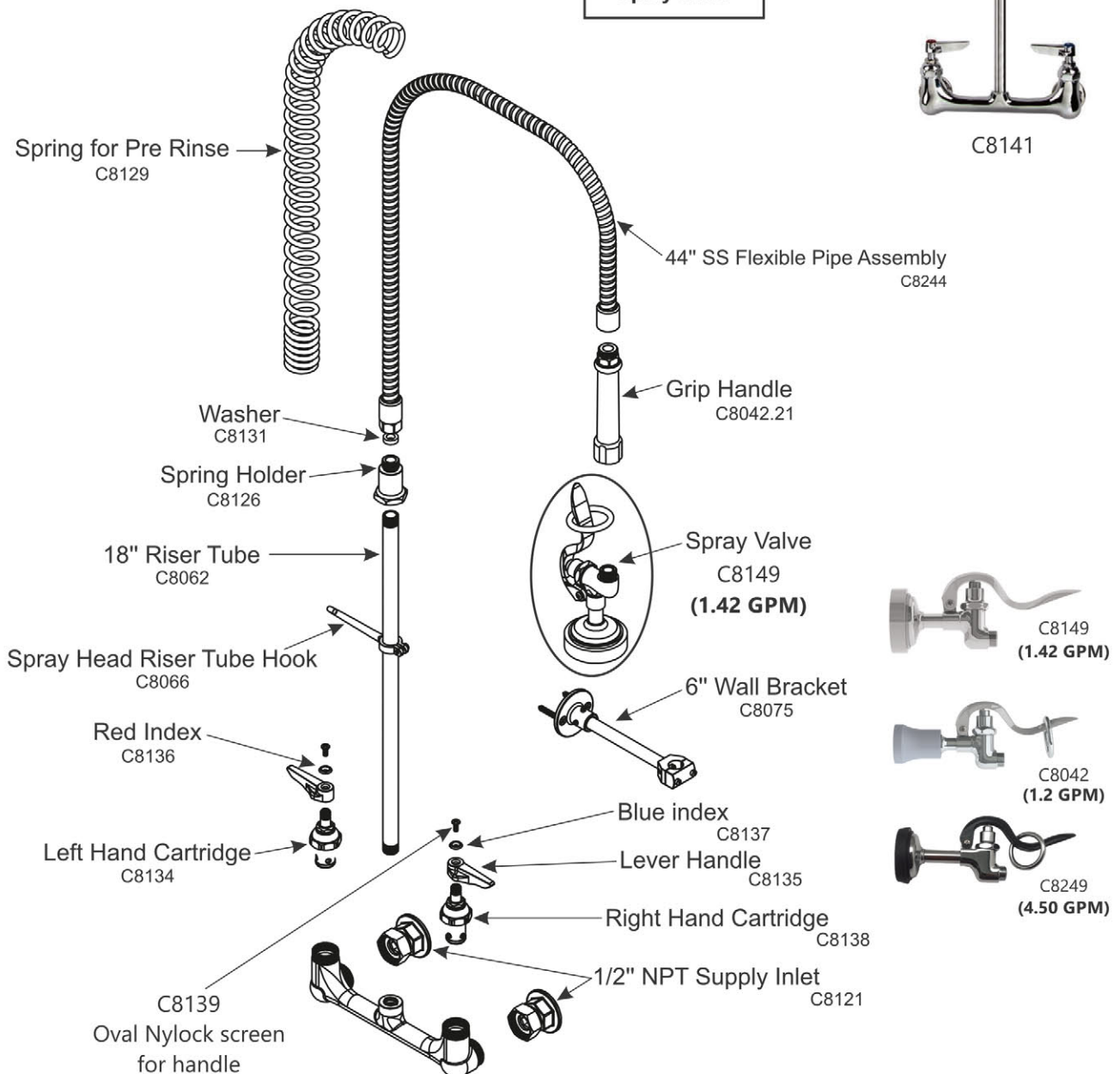
### Wall Mount

| Part # | Part Name                                      | Price   |
|--------|--|---------|
| C8141  | Pre-Rinse Unit: 1.2 GPM, 8" Center Wall Mount  | ₹ 12350 |
| C8198  | Pre-Rinse Unit: 1.42 GPM, 8" Center Wall Mount | ₹ 11320 |

- ✓ Faucet with 8" Centers
- ✓ Built-in Cartridges  
(Quarter Turn Cartridge with Integral Spring Check Lever )
- ✓ Inlet Kit (C8112) Sold Separately.
- ✓ Include 6" Wall Bracket.
- ✓ 1.42 GPM at 60 PSI
- ✓ 44" SS Flexible Pipe Assembly.
- ✓ 18" Riser Tube.



C8141







## Deck Mount

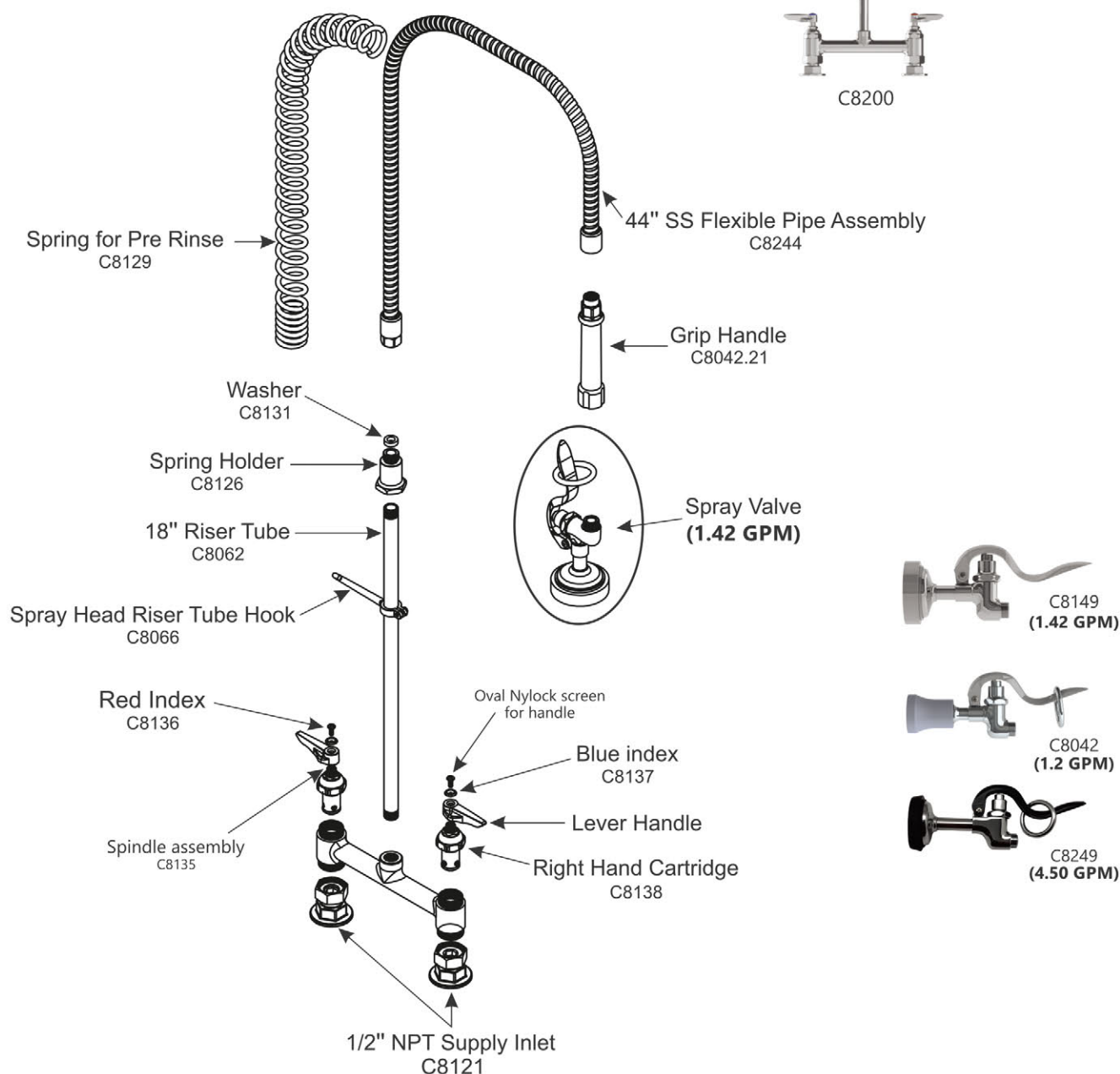


| Part # | Part Name                                      | Price   |
|--------|--|---------|
| C8199  | Pre-Rinse Unit: 1.2 GPM, 8" Center Deck Mount  | ₹ 11990 |
| C8200  | Pre-Rinse Unit: 1.42 GPM, 8" Center Deck Mount | ₹ 11840 |

- ✓ Faucet with 8" Centers
- ✓ Built-in Cartridges.  
(Quarter Turn Cartridge with Integral Spring Check Lever )
- ✓ Inlet Kit (C8118) Sold Separately.
- ✓ 1.42 GPM at 60 PSI
- ✓ 44" SS Flexible Pipe Assembly.
- ✓ 18" Riser Tube.



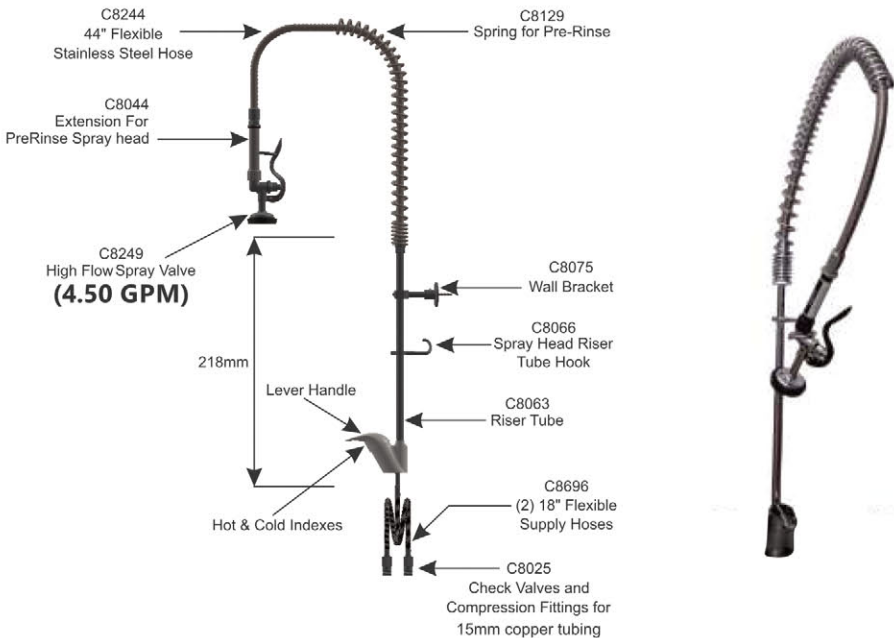
C8200



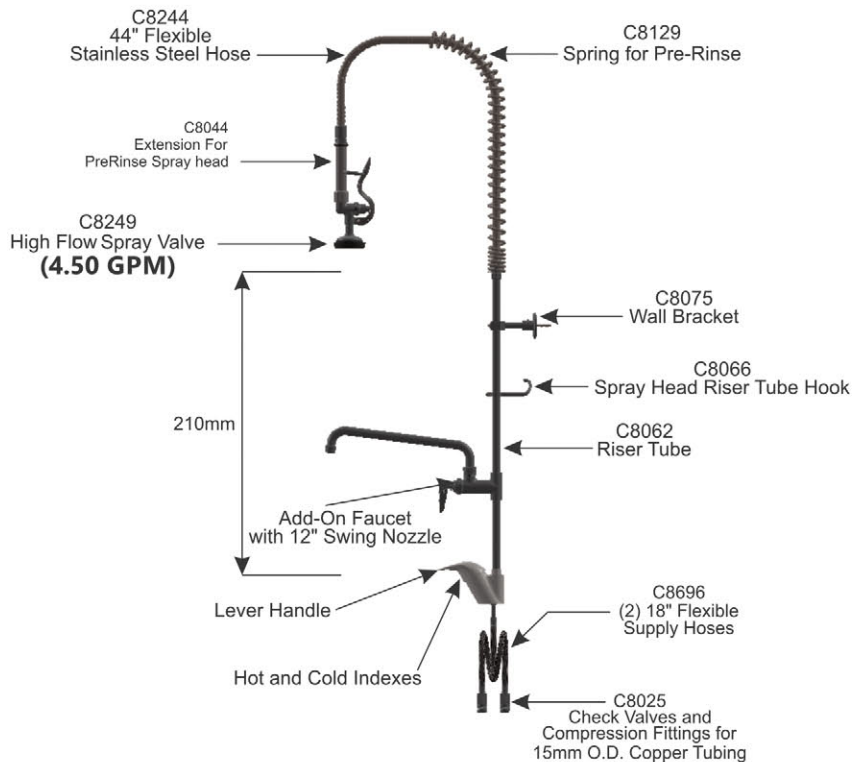




| Part # | Part Name   | Price   |
|--------|---|---------|
| C8219  | Pre-Rinse Unit: Single Lever Deck Mount Faucet with High Flow Spray Valve | ₹ 11606 |



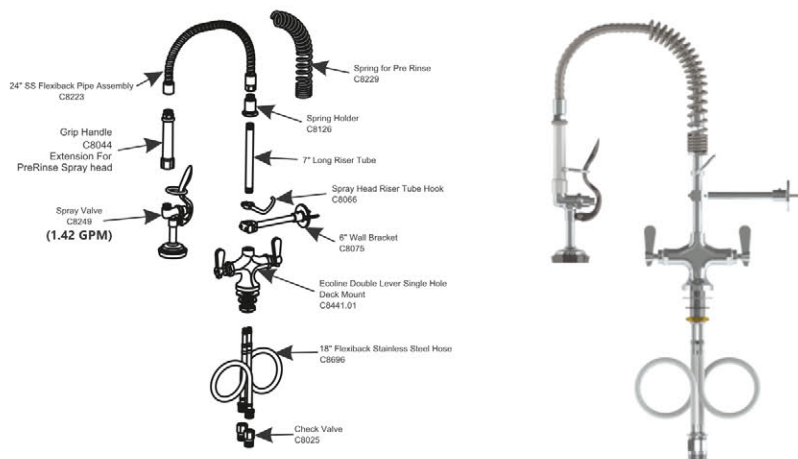
| Part # | Part Name   | Price   |
|--------|---|---------|
| C8220  | Pre-Rinse Unit: Single Lever Deck Mount, High Flow Spray Valve, Add-On Faucet | ₹ 15814 |



Ecoline



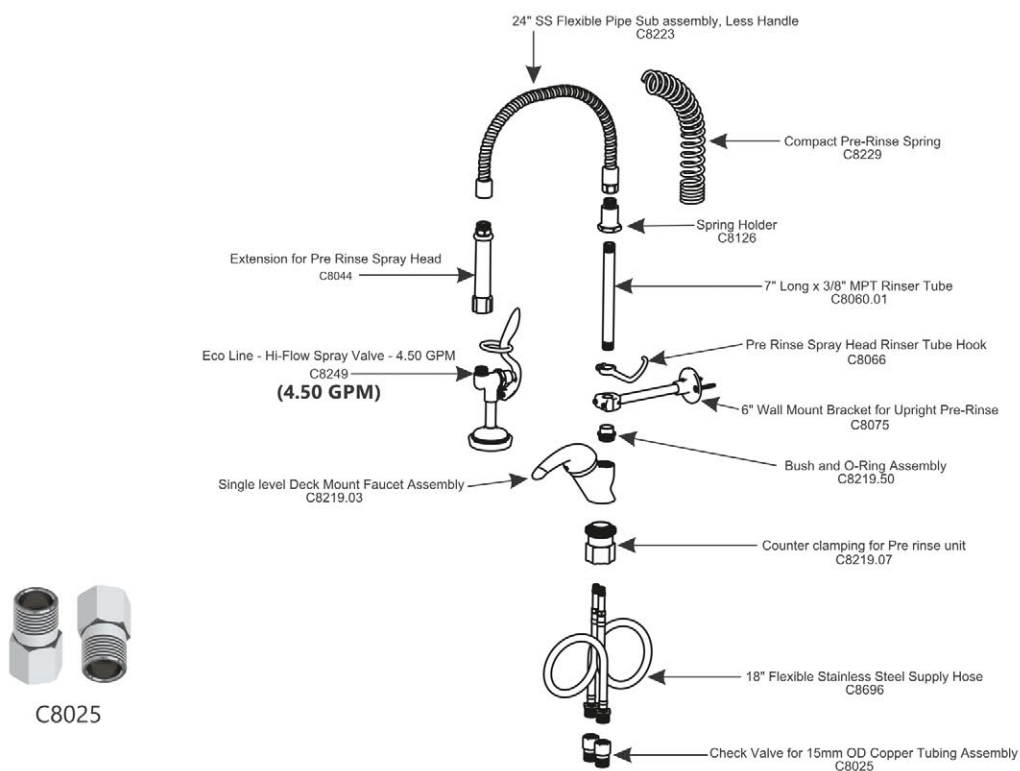
| Part # | Part Name   | Price   |
|--------|---|---------|
| C8441  | Pre Rinse Unit- Short Height Double Lever,Single Hole Deck Mount<br>Highflow Spray valve with Hoses | ₹ 13535 |



Ecoline



| Part # | Part Name  | Price   |
|--------|--|---------|
| C8221  | Pre-Rinse Unit: Short Height, Single Hole Deck Mount, High Flow Spray Valve  | ₹ 10086 |
| C8025  | Check Valve for 15 mm OD Copper<br>Tubing Assembly (1/2 male and 1/2 female) | ₹ 285   |

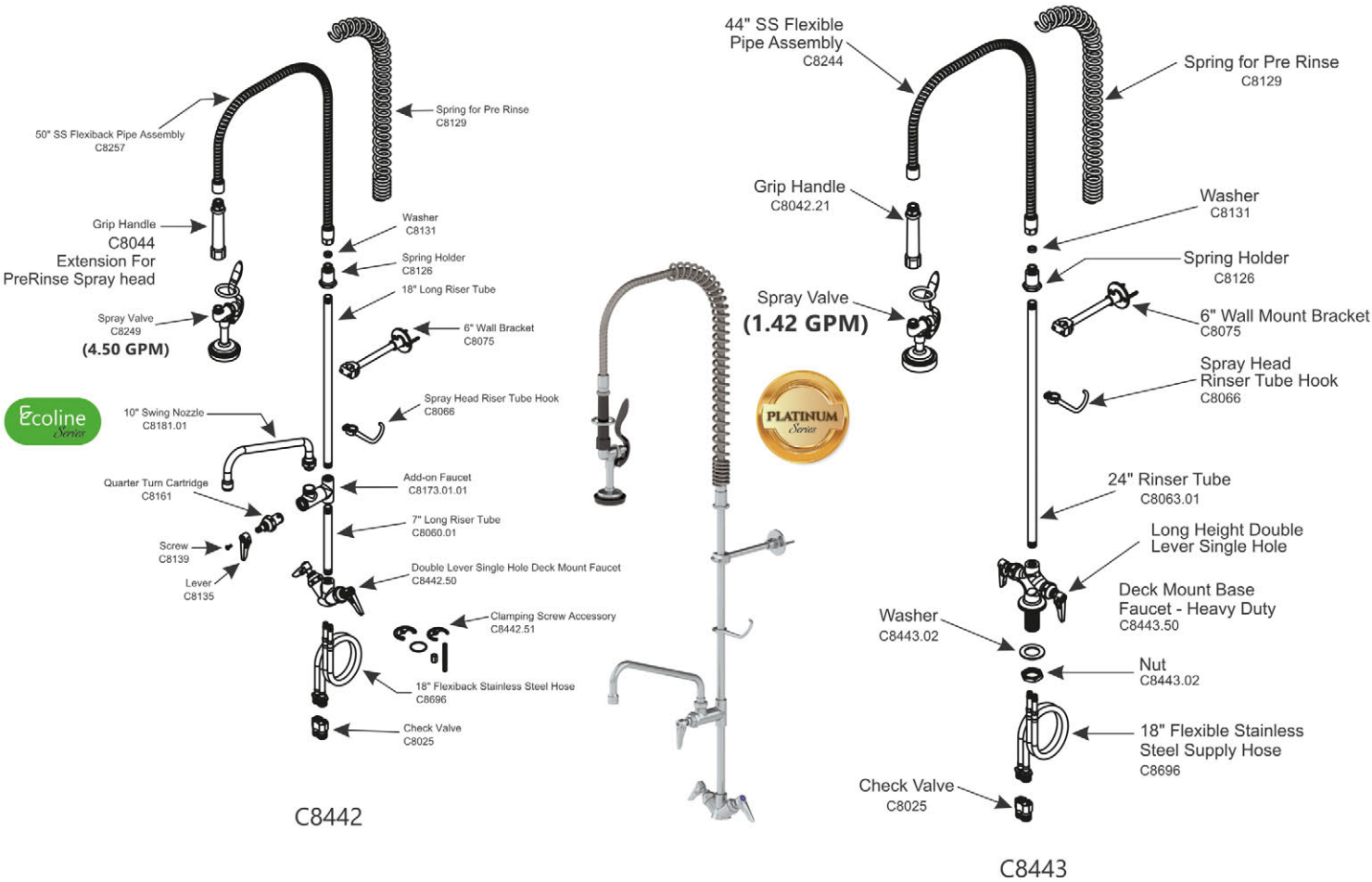


C8025



PRE- RINSE UNIT

| Part # | Part Name   | Price   |
|--------|---|---------|
| C8442  | Pre-Rinse Unit:Long Height Double Lever Single Hole Deck Mount, High Flow Spray Valve | ₹ 12310 |
| C8443  | Pre-Rinse Unit:Long Height Double Lever Single Hole Deck Mount, Spray Valve 1.42GPM   | ₹ 15226 |



ADD ON FAUCET



(Quarter Turn Classic Cartridge )\*



| Part # | Part Name                         | Price  |
|--------|-----------------------------------|--------|
| C8173  | Add on Faucet Body                | ₹ 1850 |
| C8203  | Add-on Faucet w/ 6" Swing Nozzle  | ₹ 2656 |
| C8204  | Add-on Faucet w/ 12" Swing Nozzle | ₹ 2940 |
| C8205  | Add-on Faucet w/ 18" Swing Nozzle | ₹ 3150 |
| C8210  | Add-on Faucet w/ 10" Swing Nozzle | ₹ 2960 |

# Spray Valves

**Save Money Per Store  
by Choosing Our  
Low Flow Faucets &  
Pre-Rinse Spray Valves**







C9523



| Part # | Part Name                                | Price  |
|--------|--|--------|
| C8149  | Spray Valve For Pre Rinse - 1.42GPM      | ₹ 1400 |
| C8249  | Economy - Hi-Flow Spray Valve - 4.50 GPM | ₹ 1340 |
| C9520  | Standard Spray Valve with Brush          | ₹ 1906 |
| C9523  | Pot Filler Faucet                        | ₹ 1450 |



C9520

4.50GPM



C8249

1.42GPM



C8149

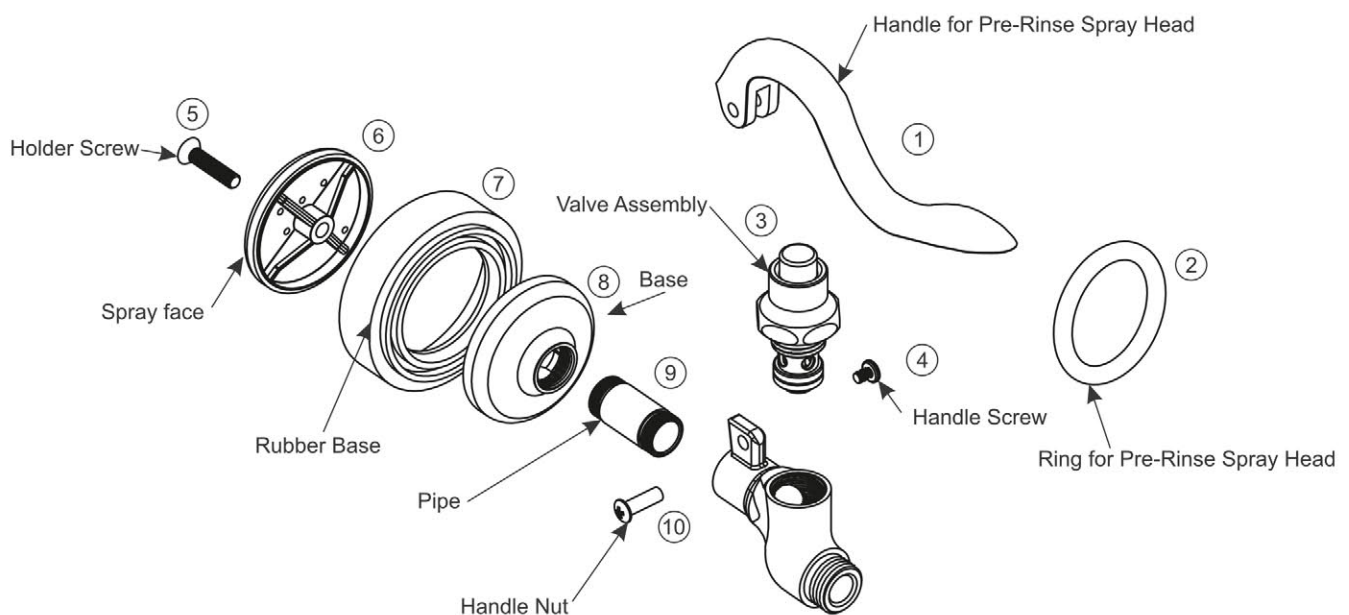
| Item # | Part #      | Part Name                               | Price |
|--------|-------------|---|-------|
| 1      | C8042.09    | Handle for Pre-Rinse Spray Head         | ₹ 200 |
| 2      | C8042.08    | Ring for Pre-Rinse Spray Head           | ₹ 390 |
| 3      | C8042.51    | Valve Assembly for Pre-Rinse Spray Head | ₹ 440 |
| 4      | C8042.19    | Binding Post Screw                      | ₹ 90  |
| 5      | C8149.01.05 | Pre Rinser Body Base Holder Screw       | ₹ 45  |
| 6      | C8149.01.03 | Pre Rinser Body Plastic Base            | ₹ 125 |
| 7      | C8149.01.04 | Pre Rinser Body Bumper (Rubber Base)    | ₹ 185 |
| 8      | C8149.01.01 | Pre Rinser body base                    | ₹ 519 |
| 9      | C8149.01.02 | Pre Rinser Body Pipe                    | ₹ 190 |
| 10     | C8042.18    | Binding Post Nut                        | ₹ 140 |



C8249.01.04



C8149.01.04



| Part # | Part Name                                   | Price  |
|--------|---|--------|
| C8042  | Low Flow Spray Valve for Pre Rinse - 1.2GPM | ₹ 1450 |

1.20GPM



C8042



Blade Spray Rinse Pattern

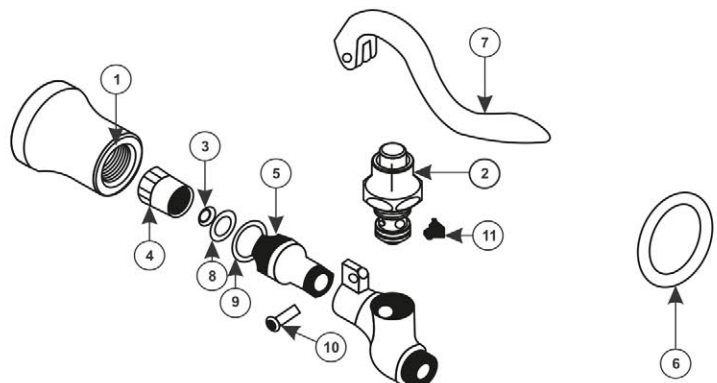
| Sr. No. | Part #   | Part Name                               | Price |
|---------|----------|---|-------|
| 1       | C8042.03 | Dish Guard Bumper Assembly              | ₹ 960 |
| 2       | C8042.51 | Valve Assembly for PreRinse Spray Head  | ₹ 440 |
| 3       | C8042.12 | Brass Washer for Pre Rinse Spray Head   | ₹ 16  |
| 4       | C8042.04 | Nozzle for Pre- Rinse Spray Head        | ₹ 190 |
| 5       | C8042.07 | Nozzle Adapter For pre-Rinse Spray Head | ₹ 335 |
| 6       | C8042.08 | Ring for Pre-Rinse Spray Head           | ₹ 400 |
| 7       | C8042.09 | Handle for Pre-Rinse Spray Head         | ₹ 190 |
| 8       | C8042.10 | Small O Ring for Pre-Rinse Spray Head   | ₹ 28  |
| 9       | C8042.11 | O ring for Pre-Rinse Spray Head         | ₹ 28  |
| 10      | C8042.18 | Binding Post Nut                        | ₹ 140 |
| 11      | C8042.19 | Binding Post Screw                      | ₹ 85  |



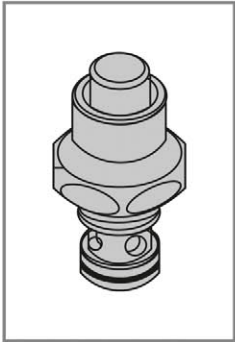
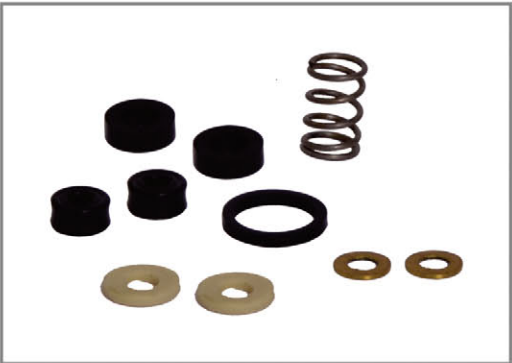
C8042.04



C8042.03

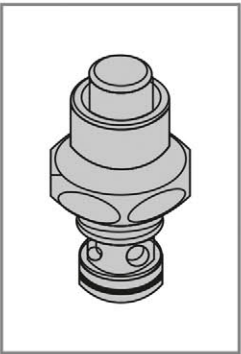


| Part # | Part Name              | Price |
|--------|------------------------|-------|
| C9510  | Spray Valve Repair Kit | ₹ 200 |

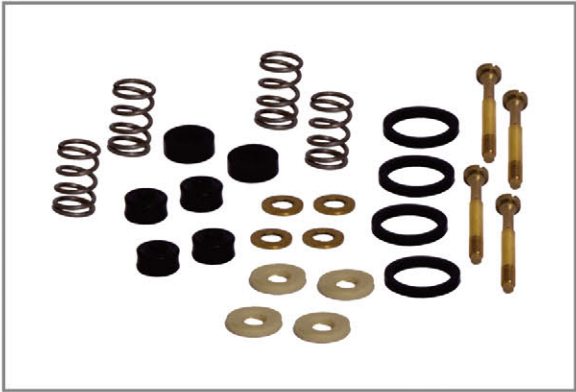


Valve Assembly

| Part # | Part Name                           | Price |
|--------|-------------------------------------|-------|
| C9509  | Pre Rinse Valve Assembly Repair Kit | ₹ 570 |

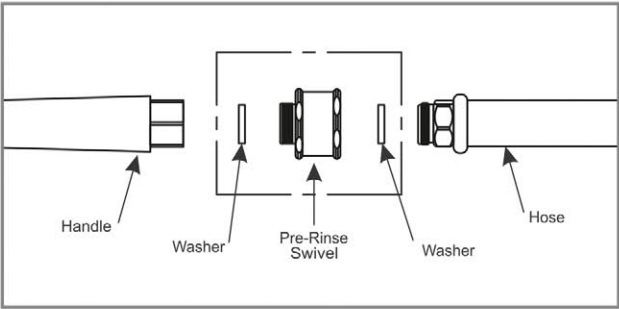


Valve Assembly



SWIVEL

| Part # | Part Name                                  | Price |
|--------|--|-------|
| C8124  | Swivel Adapter for Pre Rinse Spray Valve   | ₹ 550 |
| C8127  | Swivel assembly for Pre-Rinse Faucet       | ₹ 150 |
| C8131  | Rubber Washer for Pre Rinse Spray Assembly | ₹ 30  |



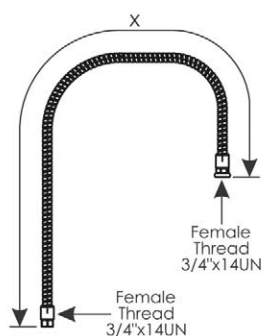




## Flexible Hose Less Handle



Reinforced hose

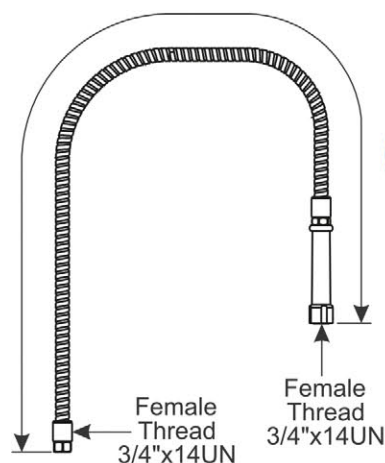


\*C8240 Recommended

| Part # | Part Name                               | Size(x) | Price  |
|--------|---|---------|--------|
| C8223  | SS Flexible pipe Assembly & Less Handle | 18-3/8" | ₹ 1160 |
| C8225  | SS Flexible pipe Assembly & Less Handle | 20-3/8" | ₹ 1250 |
| C8227  | SS Flexible pipe Assembly & Less Handle | 22-3/8" | ₹ 1320 |
| C8231  | SS Flexible pipe Assembly & Less Handle | 26-5/8" | ₹ 1440 |
| C8140  | SS Flexible pipe Assembly - Less Handle | 30-5/8" | ₹ 1640 |
| C8240  | SS Flexible pipe Assembly & Less Handle | 34-5/8" | ₹ 1790 |
| C8242  | SS Flexible pipe Assembly & Less Handle | 36-5/8" | ₹ 1870 |
| C8244  | SS Flexible pipe Assembly & Less Handle | 38-5/8" | ₹ 1940 |
| C8257  | SS Flexible pipe Assembly & Less Handle | 44-1/2" | ₹ 2180 |
| C8253  | SS Flexible pipe Assembly & Less Handle | 48-1/2" | ₹ 2340 |
| C8255  | SS Flexible pipe Assembly & Less Handle | 50-3/8" | ₹ 2450 |
| C8268  | SS Flexible pipe Assembly & Less Handle | 62-5/8" | ₹ 3000 |

## Flexible Hose With Grip Handle

| Part # | Part Name                                   | Size(x) | Price  |
|--------|---|---------|--------|
| C8218  | 18" SS Flexible pipe Assembly & Grip Handle | 18"     | ₹ 1410 |
| C8224  | 24" SS Flexible pipe Assembly & Grip Handle | 24"     | ₹ 1660 |
| C8226  | 26" SS Flexible pipe Assembly & Grip Handle | 26"     | ₹ 1790 |
| C8228  | 28" SS Flexible pipe Assembly & Grip Handle | 28"     | ₹ 1870 |
| C8232  | 32" SS Flexible pipe Assembly & Grip Handle | 32"     | ₹ 1990 |
| C8236  | 36" SS Flexible Pipe Assembly & Grip Handle | 36"     | ₹ 2200 |
| C8147  | 44" SS Flexible pipe Assembly & Grip Handle | 44"     | ₹ 2510 |
| C8248  | 48" SS Flexible pipe Assembly & Grip Handle | 48"     | ₹ 2640 |
| C8258  | 50" SS Flexible pipe Assembly & Grip Handle | 50"     | ₹ 2760 |
| C8254  | 54" SS Flexible pipe Assembly & Grip Handle | 54"     | ₹ 2920 |
| C8256  | 56" SS Flexible pipe Assembly & Grip Handle | 56"     | ₹ 3010 |
| C8267  | 68" SS Flexible pipe Assembly & Grip Handle | 68"     | ₹ 3630 |



C8226

Low Lead Compliant

# RISER TUBE



| Part # | Part Name                        | Price  |
|--------|----------------------------------|--------|
| C8060  | 7" long x 3/8" MPT - Riser Tube  | ₹ 290  |
| C8061  | 12" long x 3/8" MPT - Riser Tube | ₹ 500  |
| C8062  | 18" long x 3/8" MPT - Riser Tube | ₹ 740  |
| C8063  | 24" long x 3/8" MPT - Riser Tube | ₹ 980  |
| C8064  | 32" long x 3/8" MPT - Riser Tube | ₹ 1340 |

## SPRAY HEAD RISER TUBE HOOK

| Part # | Part Name                                    | Price |
|--------|--|-------|
| C8066  | Pre rinse Spray head riser tube Hook         | ₹ 170 |
| C8067  | Pre rinse Spray head riser tube Hook - Short | ₹ 200 |



## SPRING



| Part # | Part Name                | Price |
|--------|--------------------------|-------|
| C8129  | Pre-rinse Faucet spring  | ₹ 800 |
| C8229  | Compact Pre-rinse Spring | ₹ 420 |

## WALL BRACKETS

| Part # | Part Name                                    | Price  |
|--------|--|--------|
| C8074  | 3" Wall mount Bracket for Upright pre-rinse  | ₹ 630  |
| C8075  | 6" Wall mount Bracket for Upright pre-rinse  | ₹ 670  |
| C8076  | 9" Wall mount Bracket for Upright pre-rinse  | ₹ 790  |
| C8077  | 12" Wall mount Bracket for Upright pre-rinse | ₹ 880  |
| C8078  | 15" Wall mount Bracket for Upright pre-rinse | ₹ 980  |
| C8079  | 18" Wall mount Bracket for Upright pre-rinse | ₹ 1070 |
| C8080  | 21" Wall mount Bracket for Upright pre-rinse | ₹ 1170 |
| C8081  | 24" Wall mount Bracket for Upright pre-rinse | ₹ 1260 |



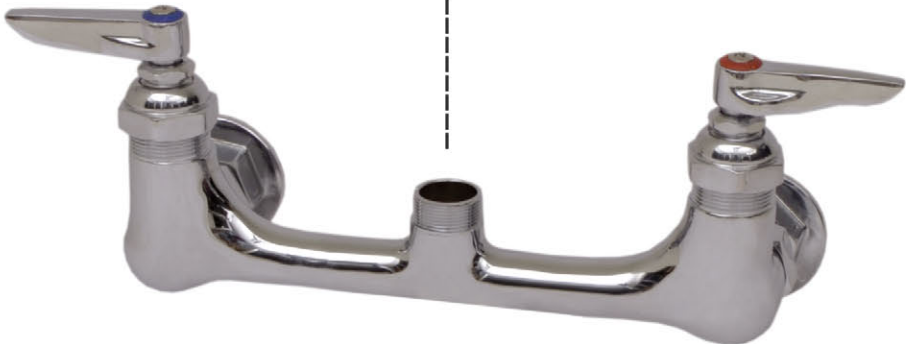


ALUIDS





|   |  |
|---|--|
|    | <p><b>Swivel Gooseneck</b></p> <p>Similar to the rigid gooseneck counterpart but with an additional feature - the neck can be rotated in any direction.</p>                    |
|    | <p><b>Swing Nozzle</b></p> <p>Available in economy and heavy-duty variants, swing nozzles are used in large sinks for their long and wide reach.</p>                           |
|  | <p><b>Double joint nozzle</b></p> <p>The double joint nozzle allows for extralong reach in commercial kitchen sinks that are huge and designed to withstand demanding use.</p> |



**Double Pantry Wall Mounted Faucet:**  
The perfect solution when you are required with steady water fixture in your facility.



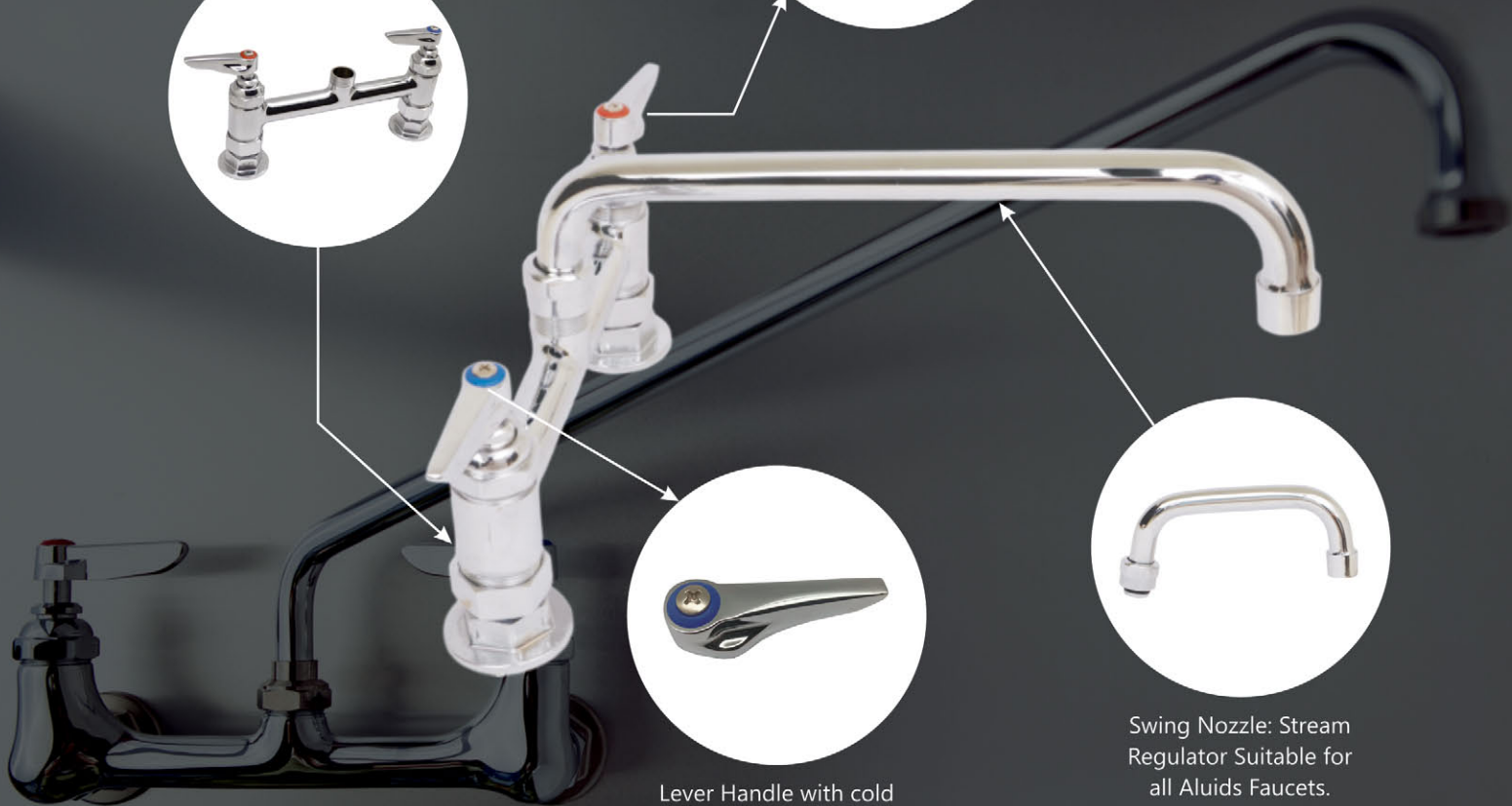
Lever handle with hot index : Pressure of 20-126 psi at temperature of 40 F to 141 F



Lever Handle with cold Index : Pressure of 20 - 126 psi at temperature of 40 F to 140 F.



Swing Nozzle: Stream Regulator Suitable for all Aluids Faucets.

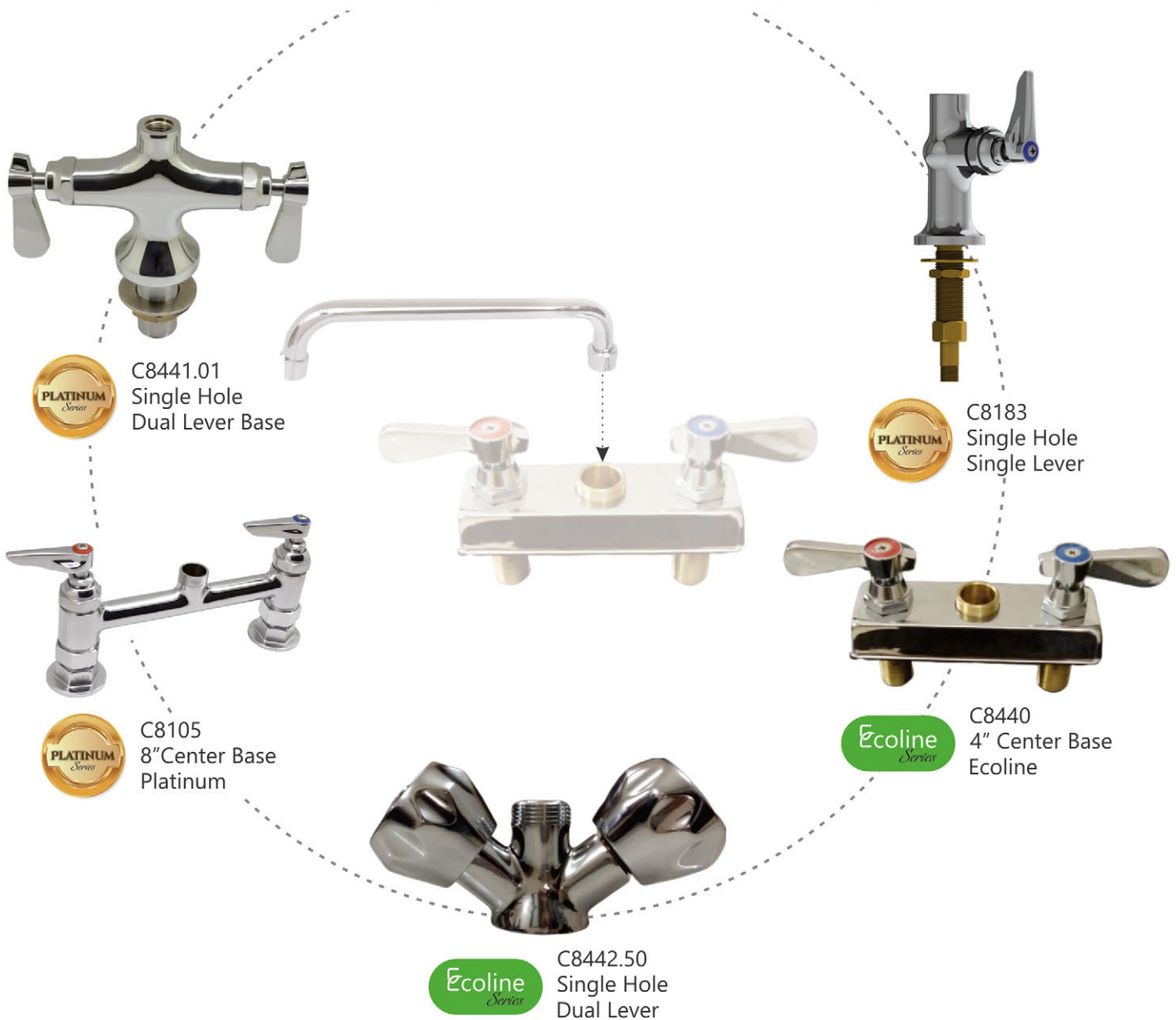


Pantry faucets are ideal to use as an extra source of water inside commercial kitchens. These faucets are elegant by design and cost-effective. Our selection of pantry faucets includes a variety of options in terms of shape, number of knobs, attachment type, mount position and neck length.

These faucets are all made from brass with chrome polish. The design ensures that the faucets are drip and clog free. Wide range of Durable and Modular Solution for COMMERCIAL KITCHENS are available here.

- ✓ Having seen our range of swing nozzles, let's dive into our faucet base collection.
- ✓ Wondering why we have them separately? Well, that's because we want you to have the best of both worlds.
- ✓ It is all about giving you the product that suits your needs!

## DECK MOUNT BASE FAUCETS



- ✓ Deck-Mount style faucet is fixed directly on the pantry sink.
- ✓ Double pantry faucet – has two cartridges for both hot and cold water lines.
- ✓ All the various nozzles that we have, the Swivel Gooseneck, and Swing nozzle can be used with this faucet category.
- ✓ The double pantry faucet bases come with 4" and 8" centers and can be chosen according to the width of your sink.
- ✓ These pantry faucets are available in Platinum as well as Ecoline model.



- ✓ Wall-Mount style pantry faucet, as the name suggests, is fixed on the wall itself directly above the pantry basin with only the nozzle above it.
- ✓ Any of our swing nozzles can be used with this base.
- ✓ These double pantry faucet bases come with 4" and 8" centers and can be chosen according to the width of your sink.
- ✓ These pantry faucets are available in Platinum as well as Ecoline model.

## WALL MOUNT BASE FAUCET



- ✓ Wall-Mount style pantry faucet, as the name suggests, is fixed on the wall itself directly above the pantry basin with only the nozzle above it.
- ✓ Any of our swing nozzles can be used with this base.
- ✓ These double pantry faucet bases come with 4" and 8" centers and can be chosen according to the width of your sink.
- ✓ These pantry faucets are available in Platinum as well as Ecoline model.

Deck Mount



| Part # | Part Name   | Price  |
|--------|---|--------|
| C8185  | Double Pantry Deck Mount Swivel Base Faucet with 6" Swing Nozzle                    | ₹ 6130 |
| C8186  | Double Pantry Deck Mount Swivel Base Faucet with 8" Swing Nozzle                    | ₹ 6140 |
| C8187  | Double Pantry Deck Mount Swivel Base Faucet with 10" Swing Nozzle                   | ₹ 6150 |
| C8188  | Double Pantry Deck Mount Swivel Base Faucet with 12" Swing Nozzle                   | ₹ 6330 |
| C8189  | Double Pantry Deck Mount Swivel Base Faucet with 18" Swing Nozzle                   | ₹ 6610 |
| C8194  | Double Pantry Faucet, Deck Mount, 8" Centers, Swivel/Rigid Gooseneck, Lever Handles | ₹ 6570 |

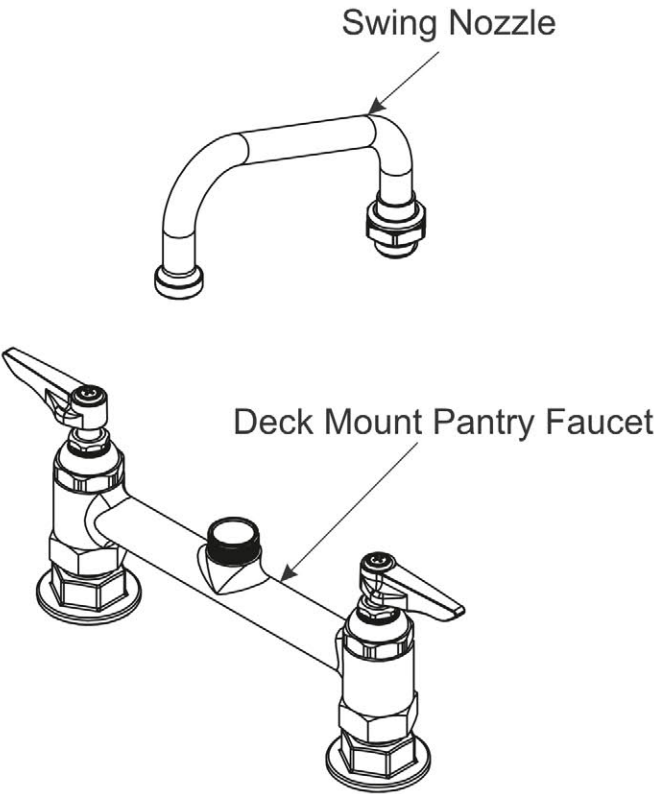
- ✓ Faucet with 8" Centers
- ✓ Built-in Cartridges.  
(Quarter Turn Cartridge with Integral Spring Check Lever )
- ✓ Inlet Kit (C8118) Sold Separately



C8185



C8194



### Wall Mount

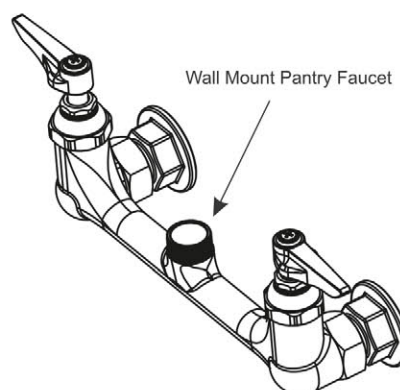
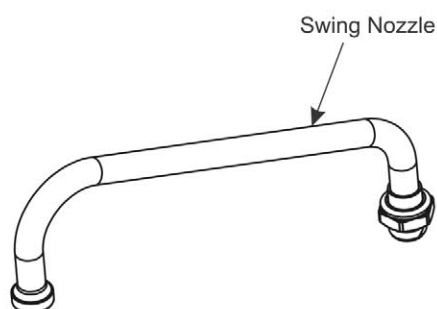


| Part # | Part Name   | Price  |
|--------|---|--------|
| C8190  | Double Pantry Wall Mount Swivel Base Faucet with 6" Swing Nozzle  | ₹ 5460 |
| C8191  | Double Pantry Wall Mount Swivel Base Faucet with 10" Swing Nozzle | ₹ 5480 |
| C8192  | Double Pantry Wall Mount Swivel Base Faucet with 12" Swing Nozzle | ₹ 5660 |
| C8193  | Double Pantry Wall Mount Swivel Base Faucet with 18" Swing Nozzle | ₹ 5940 |



C8190

- ✓ Faucet with 8" Centers
- ✓ Built-in Cartridges.  
(Quarter Turn Cartridge with Integral Spring Check Lever )
- ✓ Inlet Kit (C8112) Sold Separately



C9502



C9503



C9504



C9505



C8139

### Repair Kit

| Part # | Part Name   | Price |
|--------|---|-------|
| C9502  | Lever Handle Kit                                    | ₹ 340 |
| C9503  | Economy Lever Handle Kit                            | ₹ 340 |
| C9504  | Economy Lever Handle With COLD (BLUE) index & Screw | ₹ 150 |
| C9505  | Economy Lever Handle With HOT (RED) index & Screw   | ₹ 150 |
| C8139  | Handle Screw  | ₹ 70  |





## Deck Mount



(Quarter Turn Cartridge with Integral Spring Check Lever )\*

| Part # | Part Name   | Price  |
|--------|---|--------|
| C8105  | Double Pantry Deck Mount Swivel Base Faucet, 8" Centers | ₹ 5010 |
| C8108  | Double Pantry Deck Mount Rigid Base Faucet - 8" Centers | ₹ 5140 |

## Wall Mount



(Quarter Turn Cartridge with Integral Spring Check Lever )\*

| Part # | Part Name   | Price  |
|--------|---|--------|
| C8109  | Double Pantry Swivel Base Faucet, Wall Mount, 8" Centers, Less Nozzle | ₹ 4390 |



## Deck Mount



(Quarter Turn Cartridge with Integral Spring Check Lever )\*

| Part # | Part Name   | Price  |
|--------|---|--------|
| C8450  | Single Hole Single Temperature Commercial Deck Mount Faucet , Lever Handle , 5 1/2" Rigid Gooseneck w/stream regulator & 1/2" NPSM Male Inlet                   | ₹ 3190 |
| C8451  | Single Hole Single Temperature Commercial Deck Mount Faucet , Lever Handle , 5 1/2" Rigid Gooseneck w/stream regulator & 1/2" NPSM Male Inlet - Lead Free Brass | ₹ 3970 |

### Wall Mount



(Quarter Turn Cartridge with Integral Spring Check Lever)\*

| Part # | Part Name                                | Price  |
|--------|--|--------|
| C8106  | Wall Mount Workboard Faucet - 4" Centers | ₹ 3609 |



### Deck Mount

(Quarter Turn Cartridge with Integral Spring Check Lever)\*

| Part # | Part Name                                | Price  |
|--------|--|--------|
| C8107  | Deck Mount Workboard Faucet - 4" Centers | ₹ 2693 |



| Part # | Part Name   | Price  |
|--------|---|--------|
| C8183  | US Single Pantry Base Faucet - Heavy Duty - Lead Free Brass | ₹ 2940 |



C8183



| Part # | Part Name  | Price |
|--------|--|-------|
| C8439  | Deck mounted base without spout- for heavy duty spouts | ₹ 630 |

| Part # | Part Name                | Price |
|--------|--------------------------|-------|
| C8452  | 1/4" NPT Tailpiece & Nut | ₹ 110 |



## Ecoline



| Part # | Part Name  | Price  |
|--------|--|--------|
| C8438  | Ecoline Wall Mount Workboard Faucet - 4" Centers | ₹ 3330 |
| C8440  | Ecoline Deck Mount Workboard Faucet - 4" Centers | ₹ 3001 |



C8438



C8440



C8174



C8211

## Ecoline Spouts



| Part # | Part Name   | Price  |
|--------|---|--------|
| C8174  | 6" Ecoline Swing Nozzle fits, (Aluids)                    | ₹ 820  |
| C8175  | 8" Ecoline Swing Nozzle fits, (Aluids)                    | ₹ 870  |
| C8176  | 10" Ecoline Swing Nozzle fits, (Aluids)                   | ₹ 910  |
| C8133  | 12" Ecoline Swing Nozzle for Pre-rinse tap fits, (Aluids) | ₹ 1120 |
| C8177  | 14" Ecoline Swing Nozzle fits, (Aluids)                   | ₹ 1110 |
| C8178  | 16" Ecoline Swing Nozzle fits, (Aluids)                   | ₹ 1280 |

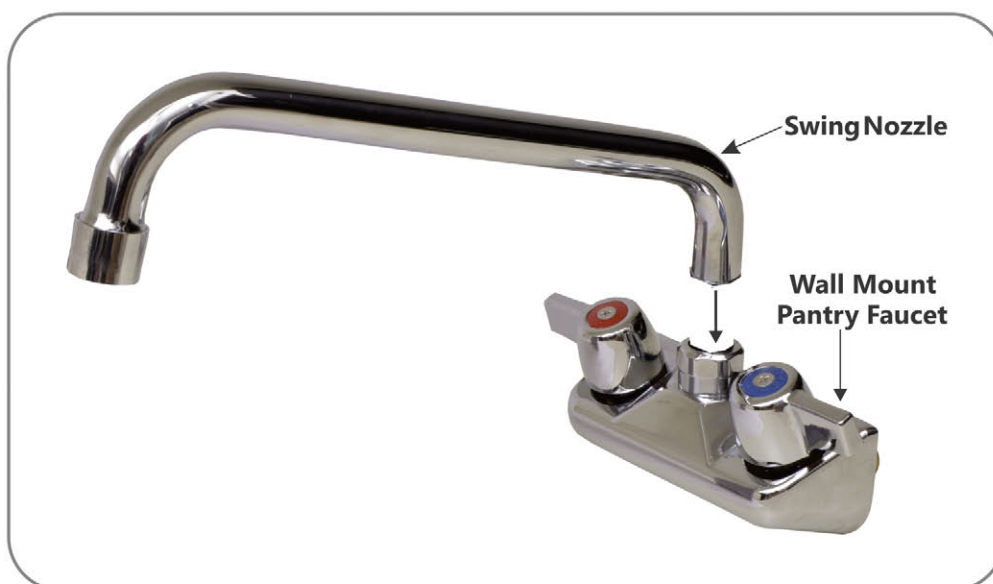




## Platinum Spouts



| Part # | Part Name                   | Price  |
|--------|-----------------------------|--------|
| C8179  | 6" Swing Nozzle - Platinum  | ₹ 990  |
| C8180  | 8" Swing Nozzle - Platinum  | ₹ 1010 |
| C8181  | 10" Swing Nozzle - Platinum | ₹ 1080 |
| C8145  | 12" Swing Nozzle - Platinum | ₹ 1240 |
| C8182  | 18" Swing Nozzle - Platinum | ₹ 1610 |



## Joint Swing Nozzle



| Part # | Part Name  | Price  |
|--------|--|--------|
| C8206  | 12" Double Joint Swing Nozzle (6" Back Section/ 6" Front Section)  | ₹ 2046 |
| C8207  | 15" Double Joint Swing Nozzle (9" Back Section, 6" Front Section)  | ₹ 2139 |
| C8208  | 18" Double Joint Swing Nozzle (12" Back Section, 6" Front Section) | ₹ 2227 |





C8209

Standard Swing Nozzle



| Part # | Part Name                | Price |
|--------|--------------------------|-------|
| C8209  | 6" Standard Swing Nozzle | ₹ 850 |

Swing Gooseneck

| Part # | Part Name   | Price  |
|--------|---|--------|
| C8201  | Rigid Gooseneck, 5-1/2" Spread, 10-1/4" Height, 5-5/16" Clearance   | ₹ 1140 |
| C8202  | Swivel Gooseneck, 5-11/16" Spread, 10-3/8" Height, 6-3/8" Clearance | ₹ 1160 |



C8201





| Part # | Part Name  | Price |
|--------|--|-------|
| C8112  | Wall Faucet Mounting Kit with 1/2 npt Male x Female Ells | ₹ 930 |



| Part # | Part Name   | Price  |
|--------|---|--------|
| C8121  | 1/2" NPT Female Eccentric Flange assembly with washer | ₹ 1230 |
| C8122  | 3/4" NPT Female Eccentric Flange assembly with washer | ₹ 1230 |
| C8123  | 3/8" NPT Female Eccentric Flange assembly with washer | ₹ 1230 |
| C8125  | White Washer for Eccentric Coupling Flange Assembly   | ₹ 20   |



| Part # | Part Name                | Price |
|--------|--------------------------|-------|
| C8118  | Deck Faucet Mounting Kit | ₹ 360 |



Water Line Kit

Soldering or Teflon Tape not Required.

| Part # | Part Name   |
|--------|---|
| C8581  | 3/8" Wall mount faucet Water Line Kit - 22" length                          |
| C8582  | 1/2" Wall Mount Faucet Water Line Kit - 18" length                          |
| C8583  | 3/8" Wall Mount Faucet Water Line Kit -22" With Mounting Hardware           |
| C8584  | 3/8" Traditional Flexible Water Line Kit -24" length With Mounting Hardware |
| C8585  | 3/8" Wall Mount Faucet Water Line Kit -30" length with Mounting Hardware    |
| C8586  | 3/8" Straight Copper Water Line Kit-14" length                              |
| C8587  | 1/2" High Volume Wall Mount Faucet Water Line Kit - 24" Length              |

Call for Pricing  
91754 00 006

- ✓ Two 3/8" Stainless Steel Braided Flexible Hoses.
- ✓ Includes 1/2" NPT Close Elbows With 3/8" Swivel Compression Fittings.
- ✓ Swivel Compression fittings on the water supply side.





| Part # | Part Name  | Price  |
|--------|--|--------|
| C8160  | Classic Cartridge With Lever Handle, Index, Screw (COLD) | ₹ 1760 |
| C8159  | Classic Cartridge With Lever Handle, Index, Screw (HOT)  | ₹ 1560 |



| Part # | Part Name   | Price  |
|--------|---|--------|
| C8161  | Quarter Turn Classic Cartridge (HOT) for Manual Faucet  | ₹ 870  |
| C8162  | Quarter Turn Classic Cartridge (COLD) for Manual Faucet | ₹ 870  |
| C8163  | Classic Cartridge (HOT) for Manual Faucet               | ₹ 1230 |
| C8164  | Classic Cartridge (COLD) for Manual Faucet              | ₹ 1480 |



| Part # | Part Name  | Price  |
|--------|--|--------|
| C8157  | Quarter Turn Classic Cartridge With Integral Spring Check, Lever Handle, (HOT) Index, Screw  | ₹ 1590 |
| C8158  | Quarter Turn Classic Cartridge With Integral Spring Check, Lever Handle, (COLD) Index, Screw | ₹ 1590 |

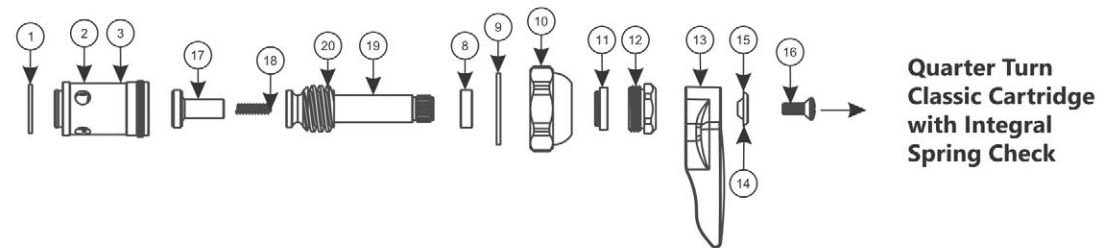
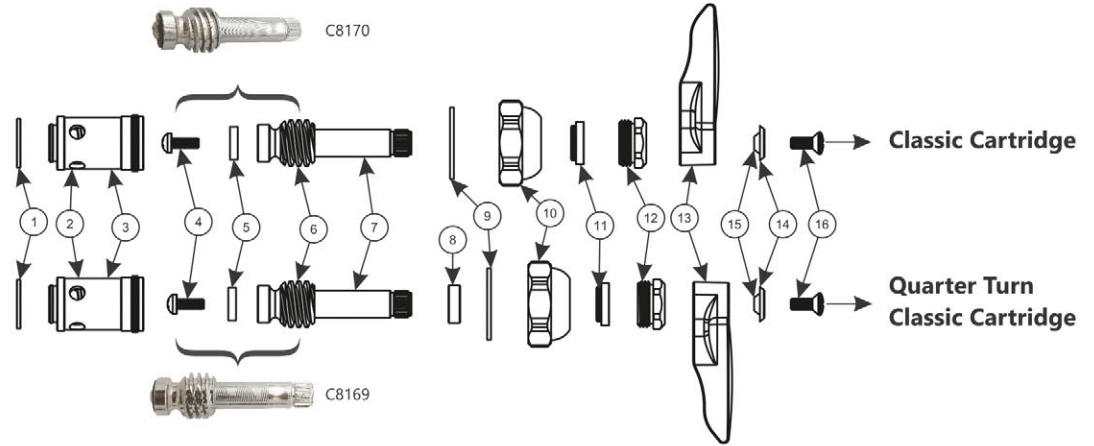


| Part # | Part Name                                   | Price |
|--------|---|-------|
| C8154  | Lever Handle With COLD (BLUE) index & Screw | ₹ 180 |

| Part # | Part Name                                 | Price |
|--------|---|-------|
| C8155  | Lever Handle With HOT (RED) index & Screw | ₹ 180 |



## Faucet Cartridges



| SR. No. | Part #   | Part Name                                   |
|---------|----------|---|
| 1       | C8134.09 | Seat Washer for Spindle Assembly            |
| 2       | C8138.02 | Chamber for Spindle Assembly- Cold (LH)     |
| 3       | C8134.02 | Chamber for Spindle Assembly- Hot (RH)      |
| 4       | C8169.03 | Seat Screw                                  |
| 5       | C8169.02 | Seat Washer                                 |
| 6       | C8169.01 | Spindle for Hot Side (RH)                   |
| 7       | C8170.01 | Spindle for Cold Side (LH)                  |
| 8       | C8134.05 | Spacer For Spindle assembly                 |
| 9       | C8134.06 | Bonnet Washer for Spindle Assembly          |
| 10      | C8134.04 | Bonnet for Spindle Assembly                 |
| 11      | C8134.10 | Rubber Washer for Spindle Assembly          |
| 12      | C8134.11 | Hex Nut for Spindle Assembly                |
| 13      | C8135    | Lever                                       |
| 14      | C8137    | Cold Index (Blue)                           |
| 15      | C8136    | Hot Index (Red)                             |
| 16      | C8139    | Oval ( Raised Head) Nylock Screw for Handle |
| 17      | C8134.07 | Check Valve for Spindle Assembly            |
| 18      | C8134.08 | Spring for Spindle Assembly                 |
| 19      | C8138.01 | Spindle for Cold Side (LH)                  |
| 20      | C8134.01 | Spindle for Hot Side (RH)                   |

Call for Pricing  
91754 00 006



| Part # | Part Name                  |
|--------|----------------------------|
| C8861  | Glass Filler Water Station |

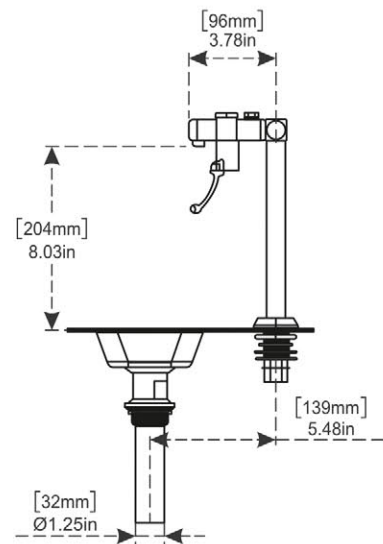
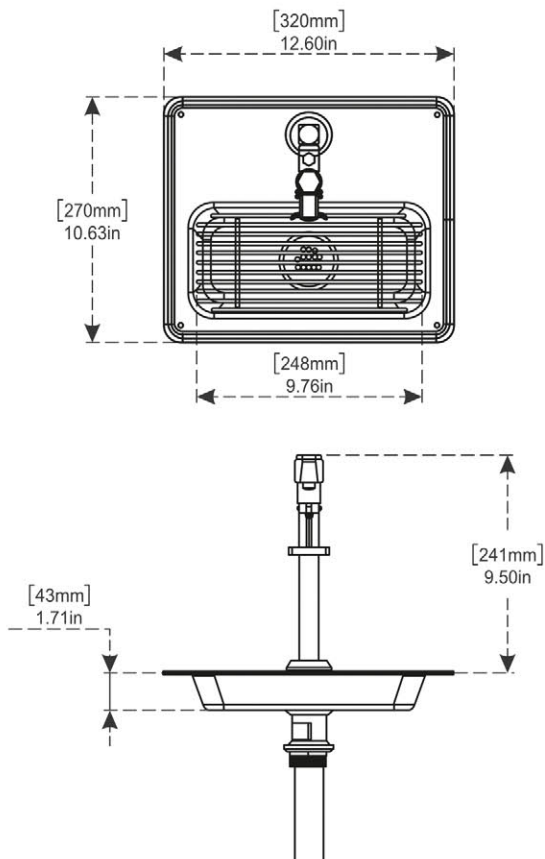
Call for Pricing  
91754 00 006

Glass fillers & water stations are designed for bars, restaurants & commercial food service kitchens. A glass filler can easily fill cups with fresh drinking water by the simple push of a glass. Available for deck mount applications, .

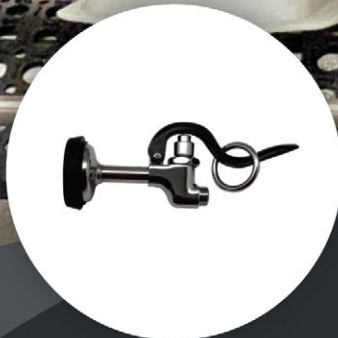


- ✓ Deck Mount Glass filler with 8" Pedestal height
- ✓ Push back glass filler with 8" clearance from tip to the pan.
- ✓ Adjustable flange on the shank of the pedestal
- ✓ Dedicated to consistent performance, product dependability and overall value.
- ✓ Fits your need and the quality that you can trust.
- ✓ Rounded edges to support the sink within the countertop
- ✓ Customers can FILL DRINKING WATER themselves while your employees work

C8861



## HOSE REEL FOR COMMERCIAL CLEANING





| Part # | Part Name                                 | Price   |
|--------|---|---------|
| C8249  | Hi-Flow Spray Valve for Pre Rinse 4.50GPM | ₹ 1340  |
| C8251  | Front trigger water gun                   | ₹ 6680  |
| C8269  | Kitchen Cleaning Water Hose Reel 16mtr    | ₹ 45300 |
| C8270  | Kitchen Cleaning Water Hose Reel 11mtr    | ₹ 42980 |

### CHOOSE FROM THESE OPTIONS



C8249



\*C8251 Recommended



C8270

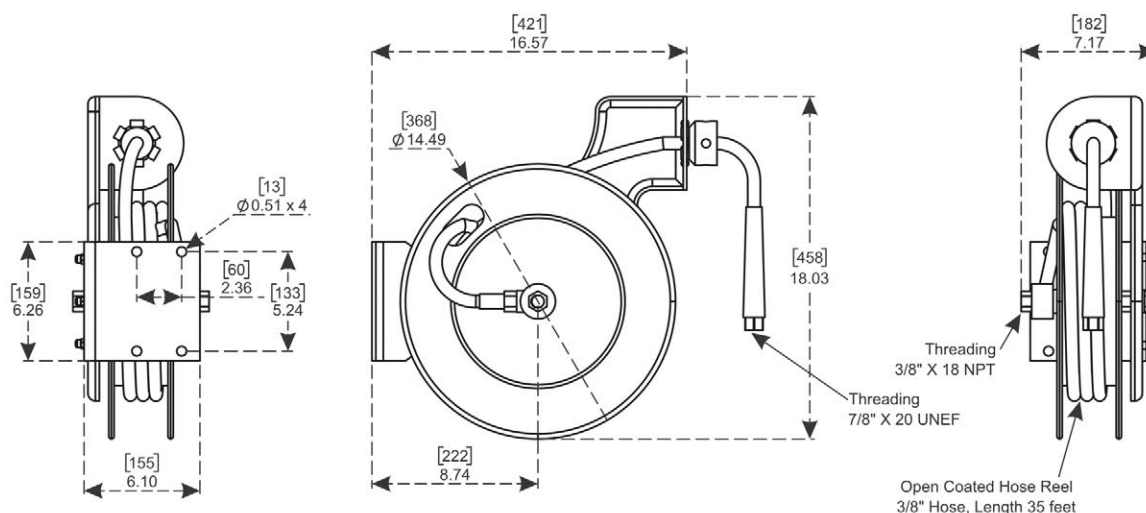
The hose reel is lightweight that is compact enough to be used in applications where too much space is present.

It can be mounted on the deck or the wall as per the space availability and the convenience.

### FEATURES :

- ✓ Length of the hose is available in 11 m and 16 m, **Heavy duty**
- ✓ Ideal for food-service, commercial kitchens, restaurants, & hotel applications
- ✓ Body material - **Steel**
- ✓ Hose material - **TPU Rubber**
- ✓ Spray gun not included (Purchase Separately)
- ✓ Multipurpose use.
- ✓ Body Material - Powder Coated Steel to Resist Corrosion.

| Hose I.D | Hose O.D |
|----------|----------|
| 10 mm    | 17 mm    |







## **INNOVATIVE WASTE DRAINS FOR LARGE KITCHENS WITH EASY ASSEMBLY & INSTALLATION.**

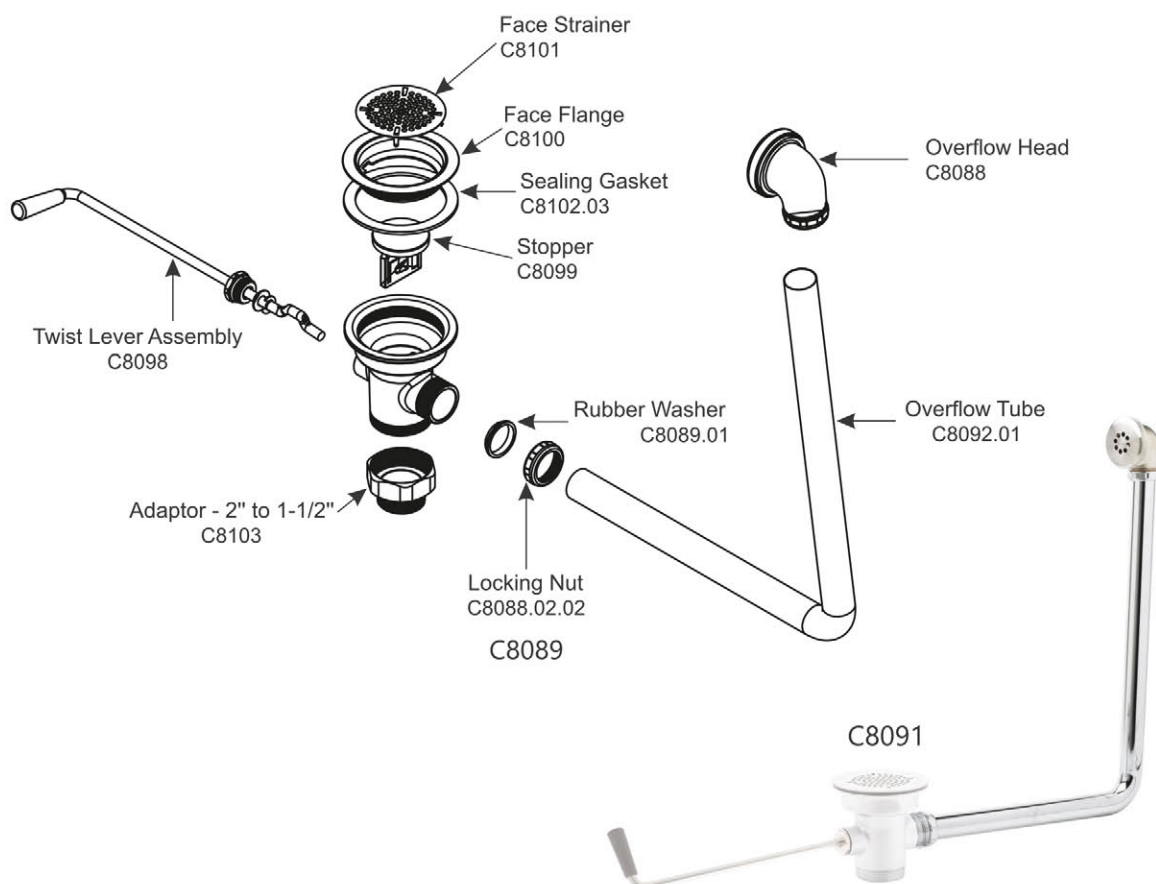


A P-trap is a plumbing fixture that has several purposes. It traps debris that has drained from the sink and prevents it from forming a clog deep within the plumbing system, and to stops sewer gases from passing into the home.

The strainer plate obstructs large food particles from entering the water pipe and the waste water flow can be controlled by rotating the twist handle. They also come with overflow tube and head option.



| Part # | Part Name  | Price  |
|--------|--|--------|
| C8089  | 3-1/2" Sink Opening Waste Drain With Twist Handle, NPT Adapter & Overflow Assembly | ₹5680  |
| C8102  | 3-1/2" Sink Opening Waste Drain With Twist Handle, NPT Adapter, Overflow Option    | ₹ 4100 |
| C8090  | 3" Sink Opening Waste Drain With Twist Handle, NPT Adapter, Overflow Option        | ₹ 3590 |



| Part # | Part Name               | Price  |
|--------|-------------------------|--------|
| C8103  | Adapter For Waste Drain | ₹ 420  |
| C8091  | Overflow assembly       | ₹ 1580 |







C8099



C8088



C8098  
12.1/4" (311mm)



C8102.02

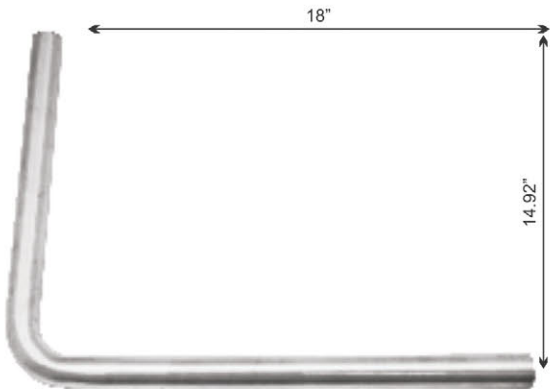


C8094



C8095

| Part #   | Part Name  | Price  |
|----------|--|--------|
| C8088    | Replacement Overflow Head                        | ₹ 1330 |
| C8092    | Overflow Elbow Tube                              | ₹ 350  |
| C8094    | Replacement Face Flange for 3" Waste Drains      | ₹ 340  |
| C8100    | Face Flange for 3-1/2" Waste Drains              | ₹ 360  |
| C8095    | Replacement Face Strainer for 3" Waste Drains    | ₹ 150  |
| C8101    | Face Strainer for 3-1/2" Waste Drains            | ₹ 130  |
| C8099    | Replacement Stopper with O-ring for Waste Drains | ₹ 500  |
| C8098    | Twist Handle Assembly                            | ₹ 430  |
| C8102.02 | Waste Valve Drain Overflow Sealing Cap           | ₹ 90   |



C8092

| Part # | Part Name                     |
|--------|-------------------------------|
| C8343  | Brass P-Trap - 1-1/2" - 17 GA |
| C8344  | Brass P-Trap - 1-1/2" - 22 GA |



C8344

Call for Pricing  
91754 00 006



C8348

| Part # | Part Name                                       |
|--------|---|
| C8348  | Continuous Waste, for 2 or 3-compartment, sinks |



### Overflow tubes and pipes

| Part # | Part Name                      | Price  |
|--------|--------------------------------|--------|
| C8043  | 7" Bar Sink Overflow Pipe      | ₹ 90   |
| C8388  | 7 .1/2" Bar Sink Overflow Pipe | ₹ 889  |
| C8399  | 10" Bar Sink Overflow Pipe     | ₹ 1105 |
| C8048  | 11" Bar Sink Overflow Pipe     | ₹ 90   |



- ✓ High-grade stainless steel body, heavy-duty and durable.
- ✓ All edges finished providing safety, burr-free.
- ✓ Installation is simple and quick also.

### Tubular Slant shelves

| Part # | Part Name               | Price  |
|--------|-------------------------|--------|
| C8271  | Tubular Slant Shelf 24" | ₹ 5330 |
| C8272  | Tubular Slant Shelf 36" | ₹ 6150 |
| C8273  | Tubular Slant Shelf 48" | ₹ 6990 |
| C8274  | Tubular Slant Shelf 60" | ₹ 7870 |



## WE CARE



Whether you have a large commercial kitchen or a small tea room, it's worth conserving water. It will save you money and help save water!

Using water efficient appliances and fixtures from ALUIDS.

can make a big difference to the amount of water and money one uses in the kitchen area.



Most of our products pre-rinse units, spray valves, flexible hoses, riser tubes, swing nozzles, pantry faucets are promised to be free of lead content.

All our products represented by  are completely lead free.



### What is the acceptable lead content?

The Environmental Protection Agency (EPA) of the United States federal government is the body that defines the standard – called the maximum contaminant level goals (MCLG) in accordance with the Safe Drinking Water Act. Lead in water is regulated under both Clean Water Act and Safe Drinking Water Act.



The accepted level of lead in drinking water is 0. Yes, zero tolerance. This is because lead is a toxic metal that can be harmful to human health even at low exposure levels.

Bathing and showering in water with low lead content doesn't cause harm since our skin doesn't absorb lead from the water.



### How does lead get into water?

Lead can enter water when plumbing material such as pipes and fixtures containing lead are corroded, especially where the water has high acidity or low mineral content.



### The solution

In order to combat this menace, there have been rapid developments to make products that come in contact with water, lead-free.

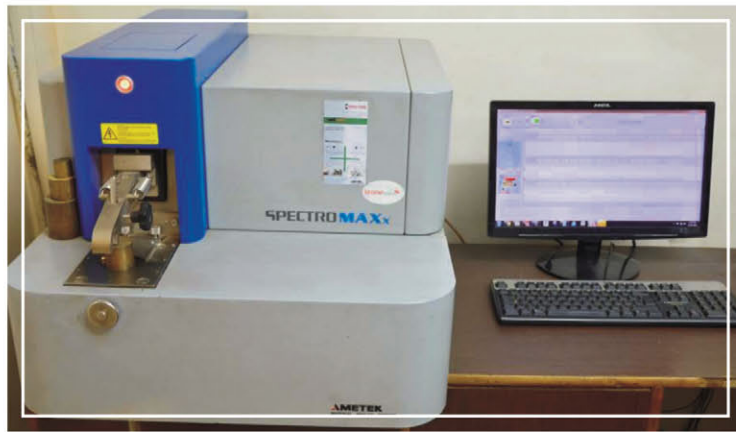
We at Aluids adhere to highest quality and safety standards and accordingly have made most of our products free of any lead exposure. Products indicated by this image are our lead-free products and components – which includes replacement parts.







**Our world-class machinery makes accurate measurements possible & enables us to provide you durable and high-quality products.**



Efficiency Matters





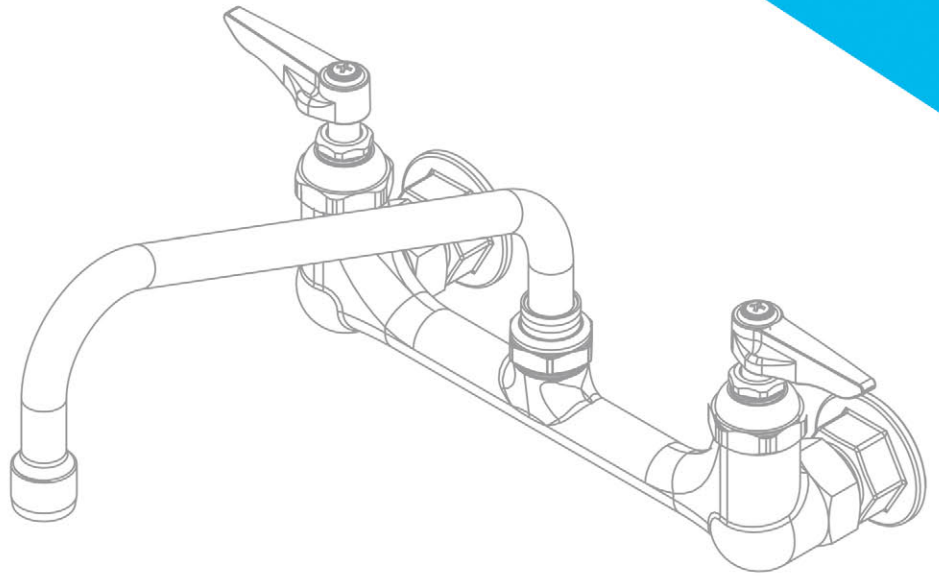
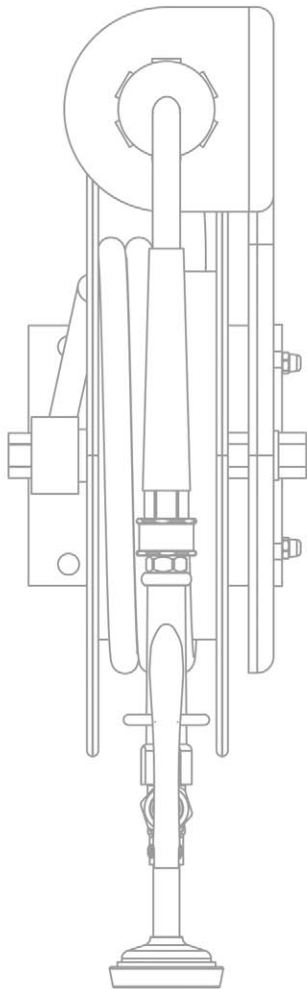
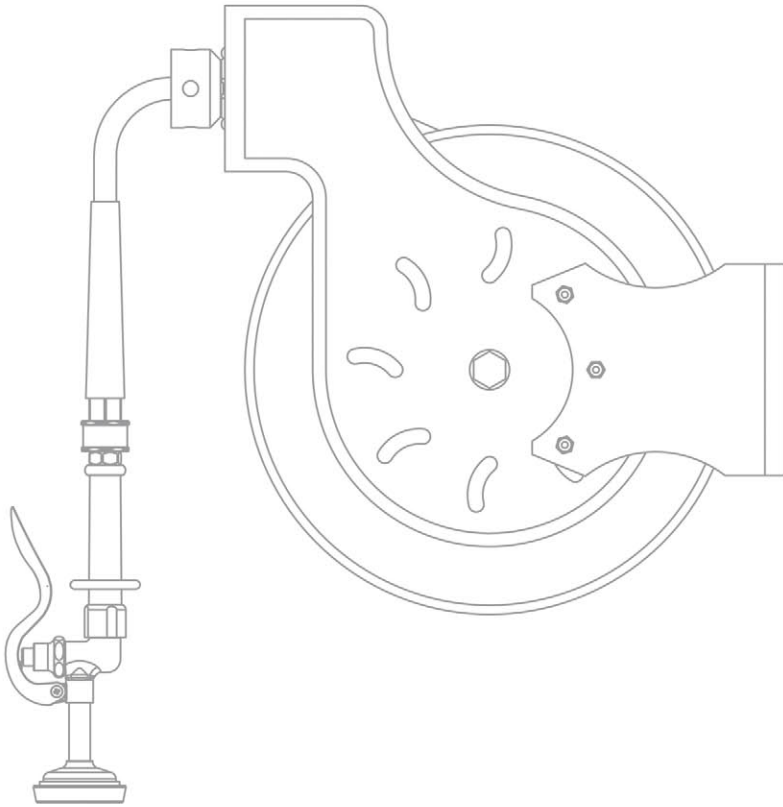
**Quality, Trust & Service** these are the long-held values that guide Aluids. We are dedicated to helping make your kitchen's a statement.

We promise to always provide safe, high-quality products made with premium materials. We pledge to remain committed to reducing our carbon footprint by applying efficient processes in the workplace to conserve energy and resources.



## Over 40 Years of Experience in Manufacturing Plumbing Products





# ALUIDS

## Distributed In India By

 Krome Dispense Pvt. Ltd.  
 D-74 Focal Point Extension,  
 Jalandhar (PB), 144004, India.  
 0181-2600009, 98142 03010  
 [info@aluids.com](mailto:info@aluids.com)  
 [www.aluids.com](http://www.aluids.com)