

For Residential and Commercial Applications

Job Name _____
Job Location _____
Engineer _____
Approval _____

Contractor _____
Approval _____
Contractor's P.O. No. _____
Representative _____

C8448 Series

Series

Single Pantry Faucet, Single Hole Base,
Wall Mount

Sizes:

Single Hole Wall Mount Pantry Faucets
with 6" to 12" Swivel Nozzle

Features & Benefits:

- Swivel Nozzle stream regulator outlet
- Polished Chrome Finish
- Lead-free Heavy Duty Wall Mounted Commercial Kitchen Faucet
- The material ensures quality and reliability
- Single supply for cold or tempered water
- The durable brass construction is designed for a lifetime of use
- Warranty 3 Years

Product Compliance:

California Proposition 65

Performance Data:

Pressure: 20- 125 PSI

Temperature: 40 °F to 140 °F

Aerators:

| Standard Aerator | Suffix | Vandal Resistant Aerator | Suffix |
|-----------------------------------|--------|-----------------------------------|--------|
| <input type="checkbox"/> 0.20 GPM | E1 | <input type="checkbox"/> 0.35 GPM | G1 |
| <input type="checkbox"/> 0.50 GPM | E2 | <input type="checkbox"/> 0.50 GPM | G2 |
| <input type="checkbox"/> 1.00 GPM | E3 | <input type="checkbox"/> 1.00 GPM | G3 |
| <input type="checkbox"/> 1.50 GPM | E4 | <input type="checkbox"/> 1.50 GPM | G4 |
| <input type="checkbox"/> 1.80 GPM | E5 | | |
| <input type="checkbox"/> 2.20 GPM | E6 | | |

| Laminar Flow Outlet | Suffix | Vandal Resistant Laminar Flow Outlet | Suffix |
|-----------------------------------|--------|--------------------------------------|--------|
| <input type="checkbox"/> 0.50 GPM | F1 | <input type="checkbox"/> 0.35 GPM | H1 |
| <input type="checkbox"/> 1.50 GPM | F2 | <input type="checkbox"/> 0.50 GPM | H2 |
| | | <input type="checkbox"/> 1.00 GPM | H3 |
| | | <input type="checkbox"/> 1.50 GPM | H4 |

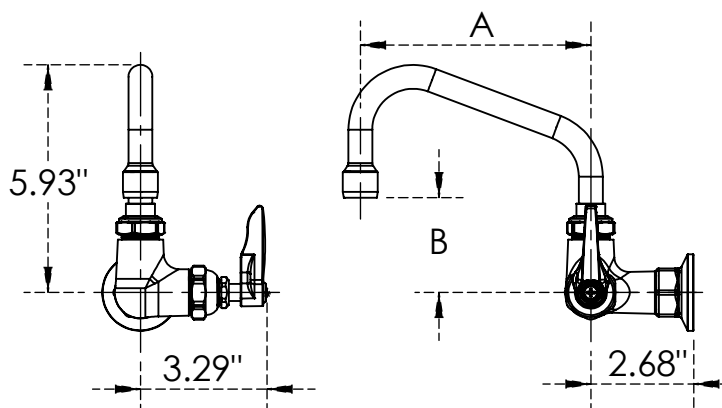
Model e.g.

C8448-E1

Standard Aerator
0.20 GPM

C8448-G3

Vandal Resistant Aerator
1.00 GPM



Dimensions - Weights

| MODEL | Main Body | | DIMENSIONS | | | | WEIGHT |
|-------|-------------|---------------|------------------------|-----|----------|-----|--------|
| | Faucet Body | Swivel Nozzle | Swivel Nozzle Length A | | Length B | | |
| | | | in | mm | in | mm | lbs. |
| C8448 | C8447 | C8179 | 6" | 152 | 2.47" | 63 | 3.18 |
| C8449 | C8447 | C8145 | 12" | 305 | 4.73" | 120 | 3.43 |

NOTICE

The information contained herein is not intended to replace the full product installation and safety information available or the experience of a trained product installer. You are required to thoroughly read all installation instructions and product safety information before beginning the installation of this product.

ALUIDS

US & Canada :- +1-678 666 2001

Krome product Specifications in U.S. customary units and metric are approximate and are provided for reference only. For precise measurements, please contact Krome Technical Service. Krome reserves the right to change or modify product design, construction, specifications, or materials without prior notice and without incurring any obligation to make such changes and modifications on Krome products previously or subsequently sold. For most updated specification sheet, go to www.aluids.com