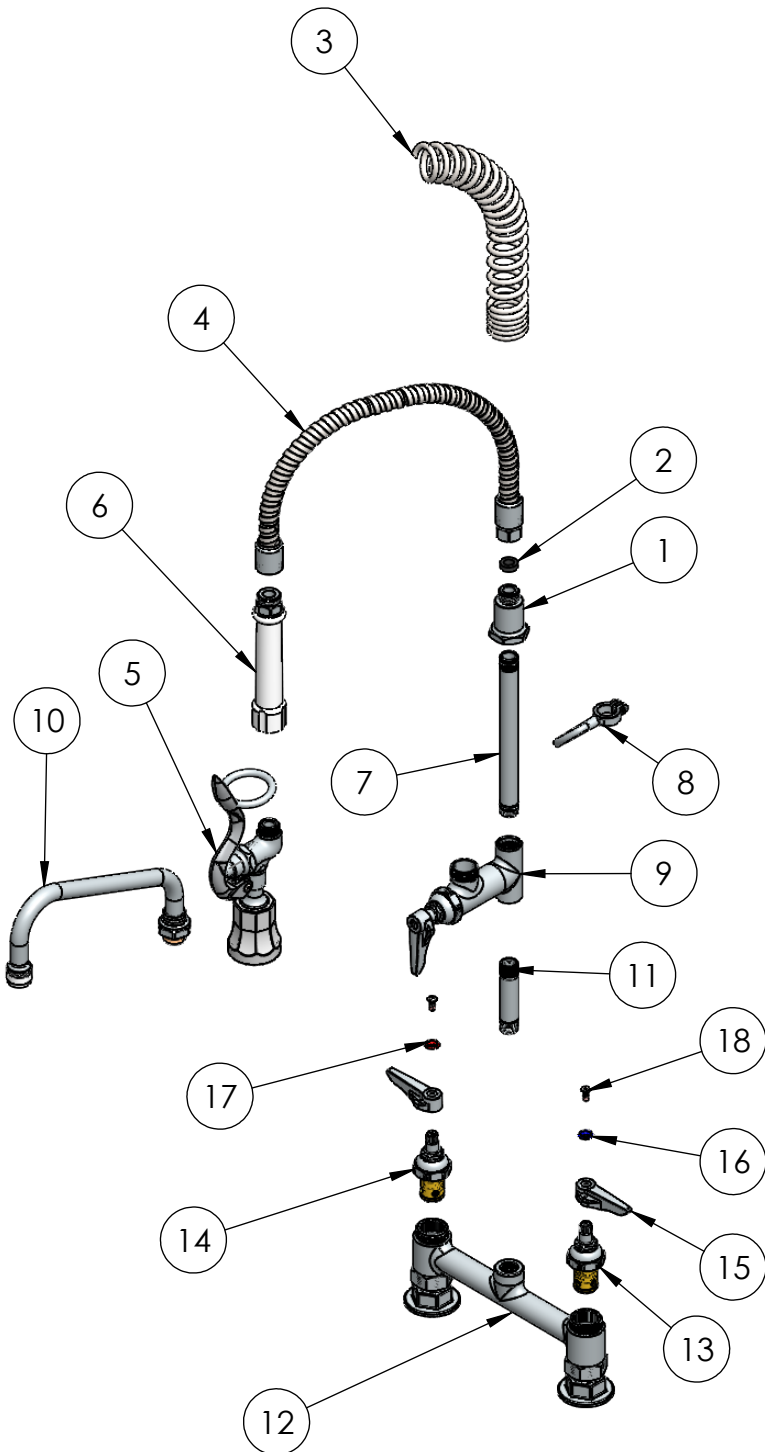


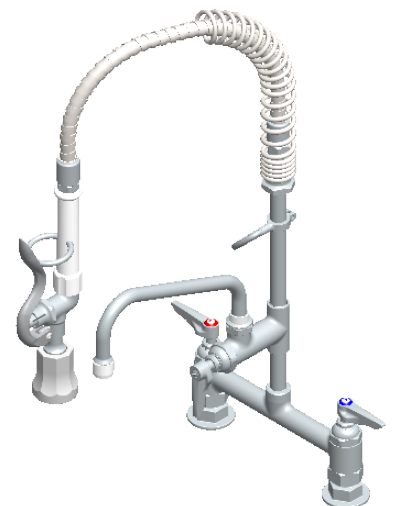
### 8" Center Deck Mount Space Saver Low-profile Pre-Rinse and Add-On Faucet with 8 inch spout

**C8470**



| ItemNo. | Part No.    | Part Name  | Qty. |
|---------|-------------|--|------|
| 1       | C8126       | Spring Holder  | 1    |
| 2       | C8131       | Washer   | 1    |
| 3       | C8229       | Compact Pre-Rinse Spring   | 1    |
| 4       | C8218.01    | 18" SS Flexible Pipe assembly, Less Handle                                   | 1    |
| 5       | C8042       | Low Flow Spray Valve For Pre Rinse 1.2 GPM                                   | 1    |
| 6       | C8042.21    | Extention for Pre Rinse Spray Head   | 1    |
| 7       | C8060.01    | 7" Long x 3/8" MPT Rinser Tube   | 1    |
| 8       | C8066       | Pre Rinse Spray Head Rinser Tube Hook  | 1    |
| 9       | C8173.50    | Add-On faucet Body with Quarter-Turn Eterna Cartridge and Lever Sub-assembly | 1    |
| 10      | C8180.01    | 8" Swing Nozzle with Stream regulator Outlet                                 | 1    |
| 11      | C8173.01.02 | Nipple, 3/8" NPT x 3"  | 1    |
| 12      | C8108       | Double Pantry Deck Mount Rigid Base Faucet (8" Centres)                      | 1    |
| 13      | C8134       | Spindle Assembly Cold (LH)   | 1    |
| 14      | C8134       | Spindle Assembly Hot (RH)  | 1    |
| 15      | C8135       | Lever for Spindle Assembly   | 2    |
| 16      | C8136       | Cold index (Blue)  | 1    |
| 17      | C8137       | hot index (Red)  | 1    |
| 18      | C8139       | Oval ( Raised Head) Nylock Screw for Handle                                  | 2    |

Copyright © 2017 Krome USA Inc. All Rights Reserved



US & Canada :- +1-678 666 2001  
 Asia:- +91-9814203010

Krome USA Inc. reserves the right to make revisions to product specifications without any notice  
 For most updated specification sheet , go to