

# For Residential and Commercial Applications

Job Name \_\_\_\_\_  
Job Location \_\_\_\_\_  
Engineer \_\_\_\_\_  
Approval \_\_\_\_\_

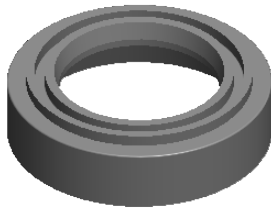
Contractor \_\_\_\_\_  
Approval \_\_\_\_\_  
Contractor's P.O. No. \_\_\_\_\_  
Representative \_\_\_\_\_

## Series:

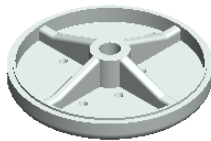
Spray Base for 1.15 GPM, Bumper & Screw Repair Kit  
C9529



8149.01.05  
Screw



8149.01.04  
Rubber Base



8149.01.03  
Spray Base



- **Features & Benefits:**
- Spray Base repair kit with Spray face, spray head ring and screw.
- Spray Base's Pressure Max is 125 psi and Pressure Min is 20 psi.
- The spray valve flow rate is 1.15 GPM.
- Made of Thermoplastic and rubber spray head ring.
- Temperature Max is 140 F 60°C and Temperature Min is 40 F 4.44°C

## Product Compliance:

- California proposition 65

**Warranty:** One Years (Limited)

## NOTICE

The information contained herein is not intended to replace the full product installation and safety information available or the experience of a trained product installer. You are required to thoroughly read all installation instructions and product safety information before beginning the installation of this product.



US & Canada :- +1-678 666 2001

Krome product Specifications in U.S. customary units and metric are approximate and are provided for reference only. For precise measurements, please contact Krome Technical Service. Krome reserves the right to change or modify product design, construction, specifications, or materials without prior notice and without incurring any obligation to make such changes and modifications on Krome products previously or subsequently sold. For most updated specification sheet, go to